

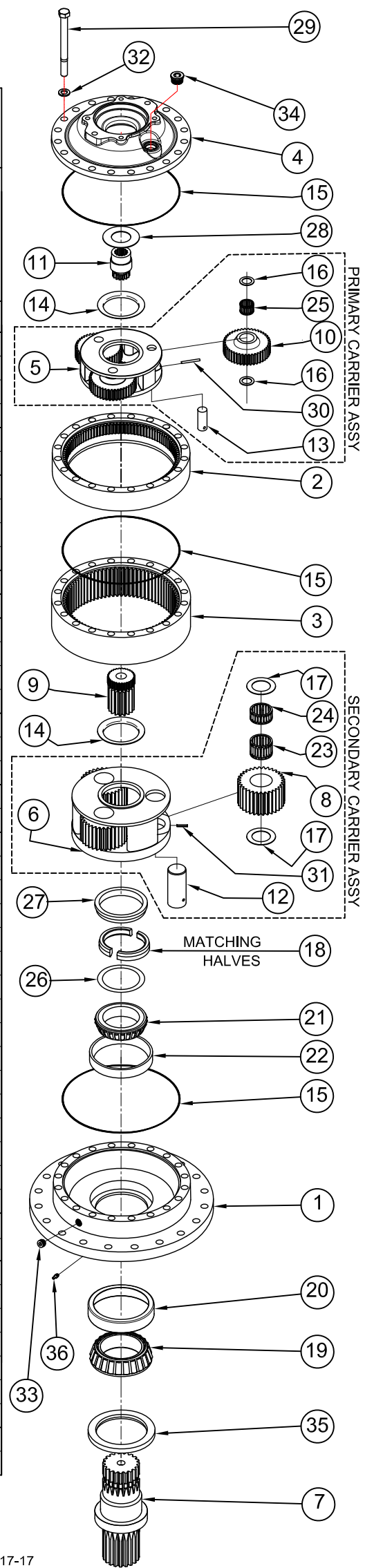


ESKRIDGE

MODEL 250L

EQUIPPED WITH "LOAD-N-LOCK"[®] SHAFT RETENTION SYSTEM.

ITEM	QTY	DESCRIPTION	RATIO →					
			20.25:1 4.3125:1 4.6957:1	25.88:1 4.3125:1 6.00:1	29.58:1 6.30:1 4.6957:1	37.80:1 6.30:1 6.00:1	40.25:1 8.5714:1 4.6957:1	51.43:1 8.5714:1 6.00:1
		250A BASE - ROUND	25-004-3042	25-004-3042	25-004-3042	25-004-3042	25-004-3042	25-004-3042
		250F BASE - FLANGELESS	25-004-3052	25-004-3052	25-004-3052	25-004-3052	25-004-3052	25-004-3052
		250Q BASE - ECCENTRIC PILOT	25-004-3132	25-004-3132	25-004-3132	25-004-3132	25-004-3132	25-004-3132
		CUSTOM BASE	-	-	-	-	-	-
		250A BASE - ROUND	25-004-3042	25-004-3042	25-004-3042	25-004-3042	25-004-3042	25-004-3042
		250F BASE - FLANGELESS	25-004-3052	25-004-3052	25-004-3052	25-004-3052	25-004-3052	25-004-3052
		250Q BASE - ECCENTRIC PILOT	25-004-3132	25-004-3132	25-004-3132	25-004-3132	25-004-3132	25-004-3132
		CUSTOM BASE	-	-	-	-	-	-
		RING GEAR - PRIMARY	25-004-1012	25-004-1012	25-004-1012	25-004-1012	25-004-1012	25-004-1012
		RING GEAR - SECONDARY	25-004-1022	25-004-1022	25-004-1022	25-004-1022	25-004-1022	25-004-1022
		A - SAE 'A' COVER	25-005-2061	25-005-2061	25-005-2061	25-005-2061	25-005-2061	25-005-2061
		B - SAE 'B' COVER	25-005-2051	25-005-2051	25-005-2051	25-005-2051	25-005-2051	25-005-2051
		C - SAE 'C' (2 AND 4 BOLT)	25-004-1222	25-004-1222	25-004-1222	25-004-1222	25-004-1222	25-004-1222
		D - SAE 'D' COVER	25-004-1232	25-004-1232	25-004-1232	25-004-1232	25-004-1232	25-004-1232
		CARRIER - PRIMARY	25-004-1052	25-004-1052	25-004-1042	25-004-1042	25-004-1032	25-004-1032
		CARRIER - SECONDARY	25-004-1072	25-004-1062	25-004-1072	25-004-1062	25-004-1072	25-004-1062
		D1 - OUTPUT SHAFT 20T 6/12 SPLINE	25-004-4032L	25-004-4032L	25-004-4032L	25-004-4032L	25-004-4032L	25-004-4032L
		D2 - OUTPUT SHAFT 3.75" DIA, KEYED	25-004-4042L	25-004-4042L	25-004-4042L	25-004-4042L	25-004-4042L	25-004-4042L
		S1 - OUTPUT SHAFT SPINDLE, 9" PILOT	25-004-4062L	25-004-4062L	25-004-4062L	25-004-4062L	25-004-4062L	25-004-4062L
		C1 - OUTPUT SHAFT - CUSTOM	-	-	-	-	-	-
		PLANET GEAR - SECONDARY	25-004-1092	25-004-1082	25-004-1092	25-004-1082	25-004-1092	25-004-1082
		SUN GEAR - SECONDARY	25-004-1152	25-004-1142	25-004-1152	25-004-1142	25-004-1152	25-004-1142
		PLANET GEAR - PRIMARY	25-004-1122	25-004-1122	25-004-1112	25-004-1112	25-004-1102	25-004-1102
		INPUT GEAR INPUT 14T SPL	25-004-1202	25-004-1202	25-004-1172	25-004-1172	25-004-1162	25-004-1162
		INPUT GEAR INPUT 13T SPL	25-004-1292	25-004-1292	25-004-1282	25-004-1282	25-004-1272	25-004-1272
		PLANET SHAFT - SECONDARY	25-004-1021	25-004-1021	25-004-1021	25-004-1021	25-004-1021	25-004-1021
		PLANET SHAFT - PRIMARY	25-004-1031	25-004-1031	25-004-1031	25-004-1031	25-004-1031	25-004-1031
		THRUST WASHER - CARRIER	25-004-1132	25-004-1132	25-004-1132	25-004-1132	25-004-1132	25-004-1132
		SEAL (O-RING)	01-402-0020	01-402-0020	01-402-0020	01-402-0020	01-402-0020	01-402-0020
		THRUST WASHER - PRI. PLANET	81-004-1561	81-004-1561	81-004-1561	81-004-1561	81-004-1561	81-004-1561
		THRUST WASHER - SEC. PLANET	25-004-1041	25-004-1041	25-004-1041	25-004-1041	25-004-1041	25-004-1041
		SPLIT RING- LOAD-N-LOCK	25-004-1182	25-004-1182	25-004-1182	25-004-1182	25-004-1182	25-004-1182
		BEARING CONE - OUTER	01-102-0120	01-102-0120	01-102-0120	01-102-0120	01-102-0120	01-102-0120
		BEARING CUP - OUTER	01-103-0110	01-103-0110	01-103-0110	01-103-0110	01-103-0110	01-103-0110
		BEARING CONE - INNER	01-102-0250	01-102-0250	01-102-0250	01-102-0250	01-102-0250	01-102-0250
		BEARING CUP - INNER	01-103-0250	01-103-0250	01-103-0250	01-103-0250	01-103-0250	01-103-0250
		BEARING - SEC PLANET GEAR	01-105-0550	01-105-0550	01-105-0550	01-105-0550	01-105-0550	01-105-0550
		BEARING - SEC PLANET GEAR	01-105-0560	01-105-0560	01-105-0560	01-105-0560	01-105-0560	01-105-0560
		BEARING - PRI PLANET GEAR	01-105-0570	01-105-0570	01-105-0570	01-105-0570	01-105-0570	01-105-0570
		SHIM - SHAFT ADJUSTMENT	25-004-1051	25-004-1051	25-004-1051	25-004-1051	25-004-1051	25-004-1051
		LOCK RING - LOAD-N-LOCK	25-004-1192	25-004-1192	25-004-1192	25-004-1192	25-004-1192	25-004-1192
		THRUST WASHER - INPUT GEAR	81-004-2883	81-004-2883	81-004-2883	81-004-2883	81-004-2883	81-004-2883
		THRUST WASHER - F/U/W/ 13T 8/16 INPUT	01-112-0030	01-112-0030	01-112-0030	01-112-0030	01-112-0030	01-112-0030
		HEX HEAD CAPSCREW (5/8-11 X 7) GR 8	01-150-1630	01-150-1630	01-150-1630	01-150-1630	01-150-1630	01-150-1630
		ROLL PIN (3/16 X 1)	01-153-0020	01-153-0020	01-153-0020	01-153-0020	01-153-0020	01-153-0020
		ROLL PIN (3/16 X 1 1/4)	01-153-0190	01-153-0190	01-153-0190	01-153-0190	01-153-0190	01-153-0190
		LOCKWASHER - (5/8)	01-166-0040	01-166-0040	01-166-0040	01-166-0040	01-166-0040	01-166-0040
		PIPE PLUG (1/2 NPT MAGNETIC) - BASE	01-207-0041	01-207-0041	01-207-0041	01-207-0041	01-207-0041	01-207-0041
		PLUG - COVER	01-208-0030	01-208-0030	01-208-0030	01-208-0030	01-208-0030	01-208-0030
		SHAFT SEAL	01-405-0500	01-405-0500	01-405-0500	01-405-0500	01-405-0500	01-405-0500
		PLUG 1/4 NPT	01-207-0020	01-207-0020	01-207-0020	01-207-0020	01-207-0020	01-207-0020
		GREASE FITTING (OPTIONAL)	01-215-0040	01-215-0040	01-215-0040	01-215-0040	01-215-0040	01-215-0040



FOR 13T, 8/16 INPUT SPLINE, USE P/N 01-112-0030 THRUST WASHER. (USE ONLY WITH 'D' COVER).

* QUANTITY OF SHIMS DETERMINED BY BEARING PRELOAD.

OPTIONS SEAL KIT P/N 25-016-2021
INCLUDES 1 EA. OF ITEMS 35
AND A QTY 3 OF ITEM 15

E.C.N. 4078
X250LD2-AD DATE: 04-17-17