

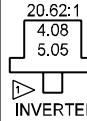
# ESKRIDGE MODEL B20L

EQUIPPED WITH PATENTED "LOAD-LOCK"™  
SHAFT RETENTION SYSTEM. (U.S. PATENT NO. 5746517).

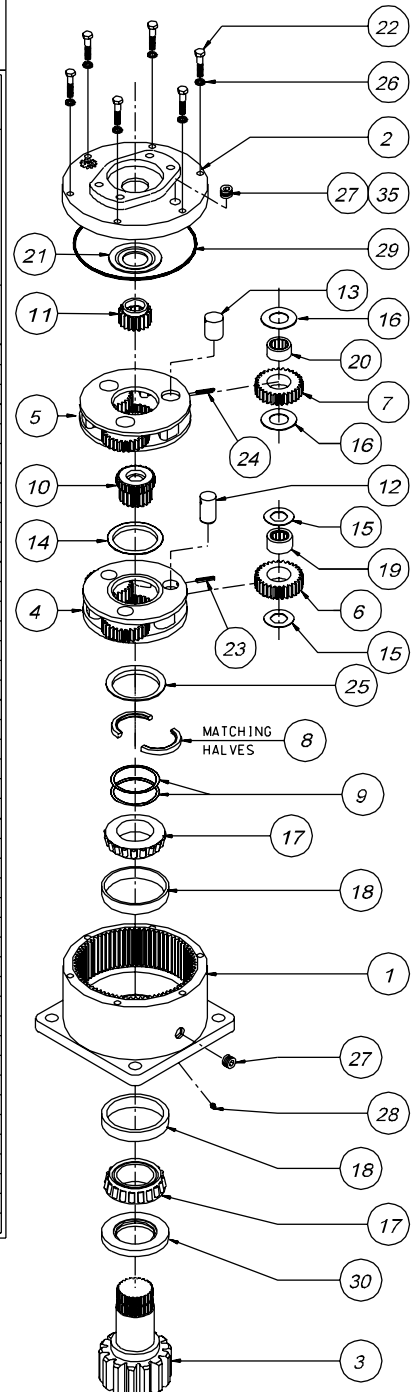
## DOUBLE PLANETARY

EFFECTIVE  
FROM: S/N 16401 07-01-93  
TO: (CURRENT)

▶  
RATIO



ITEM	QTY.	PART NUMBER	PART NUMBER	PART NUMBER	PART NUMBER
1	1	20-004-3014			
		20-004-3014Z			
		-	-	-	-
2	1	85-004-1513			
		85-004-1503			
		28-004-1013			
3	1	20-004-4022L			
		20-004-4032L			
		20-004-4042L			
		28-004-4202L			
		-	-	-	-
4	1	20-004-1282	20-004-1282	20-004-1292	20-004-1292
5	1	50-004-1082	50-004-1072	50-004-1082	50-004-1072
6	3	20-004-1041	20-004-1041	20-004-1051	20-004-1051
7	3	85-004-1031	85-004-1021	85-004-1031	85-004-1021
8	1	20-004-1362			
9	*	20-004-1091			
10	1	20-004-1332	20-004-1062	20-004-1072	20-004-1072
		85-004-1402		85-004-1402	N/A
		85-004-1102	85-004-1062		85-004-1062
		85-004-1122	85-004-1112		85-004-1112
		85-004-1533		85-004-1533	N/A
		85-004-1542	85-004-1422		85-004-1422
		85-004-1562		85-004-1562	N/A
12	3	20-004-1081			
13	3	81-004-0071			
14	1	50-004-1011			
15	6	85-004-1181			
16	6	81-004-1561			
17	2	01-102-0160			
18	2	01-103-0160			
19	3	01-105-0010			
20	3	01-105-0410			
21	1	50-004-1091			
22	6	01-150-1400			
23	3	01-153-0210			
24	3	01-153-0080			
25	1	20-004-1372			
26	6	01-166-0110			
27	2	01-207-0070			
28	(1)	01-215-0050			
29	1	01-402-0560			
30	1	01-405-0550			
35	(1)	01-216-0070			
		-	-	-	-



▶ INVERTED RATIO SUNGEAR IS NOT COUNTERBORED FOR CODE 4 INPUT. MOTOR COMPATIBILITY MUST BE VERIFIED.

**NOTES:**

\* BEARING PRELOAD DETERMINES QUANTITY OF SHIMS.

SEAL KIT (P/N 20-016-0501) INCLUDES (1 EA.) O-RINGS AND (1 EA.) SEAL.  
AND (1 EA.) SEAL.