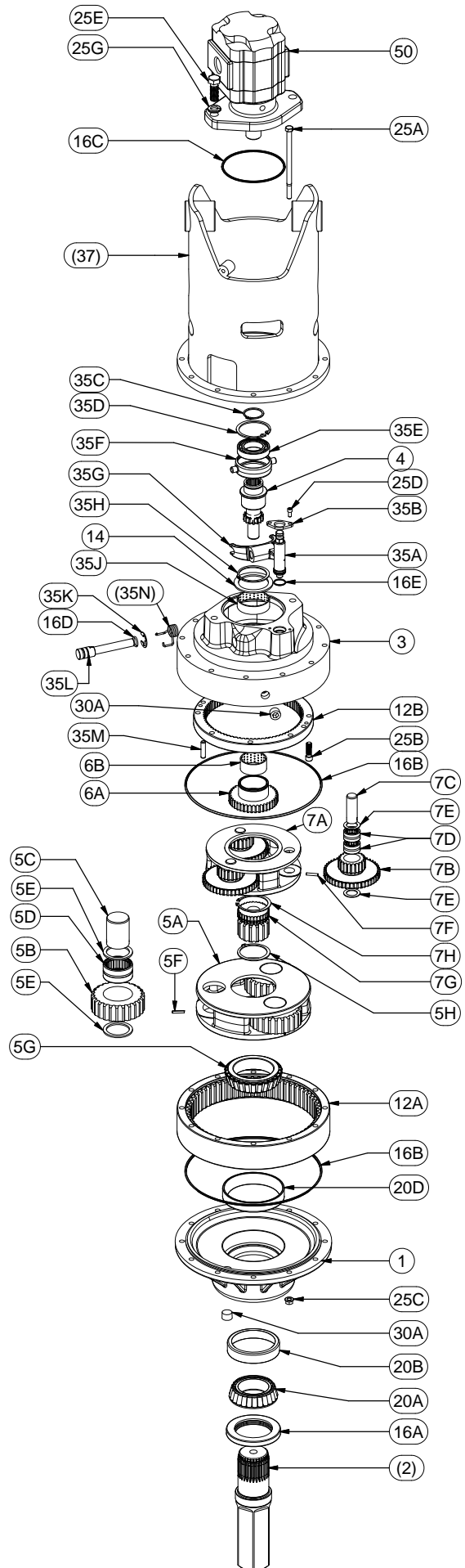




76BA & 76BC (TWO SPEED) WITH INTEGRAL SHIFT CYLINDER  
EFFECTIVE: 07-29-14 SN: 126302  
TO: CURRENT

PARTS LIST					
GROUP	ITEM	QTY	DESCRIPTION	PART NUMBER 76BA	PART NUMBER 76BC
	1	1	BEARING CARRIER	71-004-2144	71-004-2144
2	-	(1)	OUTPUT SHAFT	-	-
(2)	1	1	OUTPUT SHAFT 2-1/2" HEX	71-004-0513	71-004-0513
(2)	1	1	OUTPUT SHAFT 2-5/8" HEX	71-004-1383	71-004-1383
3	1	1	CASE: STD (2 SPEED) INTEGRATED SHIFTER	71-004-1014	71-004-1014
4	1	1	SHIFTER GEAR	71-004-0562	71-004-0572
5	-	1	CARRIER ASSEMBLY - SECONDARY	71-005-2171	71-005-2171
5A	1	1	CARRIER - SEC	71-004-0073	71-004-0073
5B	3	1	PLANET GEAR - SEC	71-004-0092	71-004-0092
5C	3	1	PLANET SHAFT	71-004-0081	71-004-0081
5D	3	1	BEARING	01-105-0020	01-105-0020
5E	6	1	THRUST WASHER - SEC PLANET	71-004-0871	71-004-0871
5F	3	1	ROLL PIN	01-153-0020	01-153-0020
5G	1	1	BEARING CONE	01-102-0100P	01-102-0100P
5H	1	1	RETAINING RING EXTERNAL	01-160-0020	01-160-0020
6	-	1	SUN GEAR ASSEMBLY	71-005-1800	71-005-1810
6A	1	1	SUN GEAR PRIMARY	71-004-0172	71-004-0402
6B	1	1	BUSHING	01-127-0010	01-127-0010
7	-	1	CARRIER ASSEMBLY - PRIMARY	71-005-1691	71-005-1701
7A	1	1	CARRIER - PRI	71-004-0113	71-004-0433
7B	3	1	CLUSTER GEAR	71-004-0132	71-004-0412
7C	3	1	PLANET SHAFT (PRIMARY)	71-004-0121	71-004-0121
7D	6	1	BEARING	01-105-0010	01-105-0010
7E	6	1	PLANET WASHER	71-004-0861	71-004-0861
7F	3	1	ROLL PIN	01-153-0020	01-153-0020
7G	1	1	SUN GEAR - SECONDARY	71-004-0102	71-004-0102
7H	1	1	RETAINING RING	01-160-0030	01-160-0030
12	-	-	RING GEARS	-	-
12A	1	1	RING GEAR	71-004-0042	71-004-0042
12B	1	1	RING GEAR	71-004-0142	71-004-0142
14	1	1	THRUST RACE	01-112-0030	01-112-0030
16	-	-	SEAL KIT	76-016-2011	76-016-2011
16A	1	1	SEAL	01-405-0540	01-405-0540
16B	2	1	O-RING	01-402-0020	01-402-0020
16C	1	1	O-RING	01-402-0010	01-402-0010
16D	1	1	O-RING - SHIFTER SHAFT	01-402-0040	01-402-0040
16E	1	1	O-RING	01-402-1013	01-402-1013
20	-	-	OUTPUT SHAFT BEARINGS	-	-
20A	1	1	BEARING CONE	01-102-0090P	01-102-0090P
20B	1	1	BEARING CUP	01-103-0080P	01-103-0080P
20D	1	1	BEARING CUP	01-103-0090P	01-103-0090P
25	-	-	HARDWARE	-	-
25A	12	1	HHCS (3/8-16X8-1/2 GR5)	01-150-0020	01-150-0020
25B	8	1	SHCS (3/8-16 X 1-1/4 GR8)	01-150-0520	01-150-0520
25C	12	1	HEX FLANGE NUT	01-158-0360	01-158-0360
25D	2	1	SOCKET HEAD CAP SCREW	01-150-0560	01-150-0560
25E	2	1	HHCS (5/8-11 X 1-3/4)	01-150-0110	01-150-0110
25G	2	1	LOCKWASHER - 5/8 ZINC PLATED	01-166-0040	01-166-0040
30	-	-	PLUGS AND ZERKS	-	-
30A	2	1	PIPE PLUG (1/2 NPT MAGNETIC)	01-207-0010	01-207-0010
35	-	-	MISCELLANEOUS	-	-
35A	1	1	SHIFT CYLINDER ASSEMBLY	71-005-0602	71-005-0602
35B	1	1	RETAINER - INTEGRATED CYLINDER	71-004-1018	71-004-1018
35C	1	1	RETAINING RING	01-160-0110	01-160-0110
35D	1	1	RETAINING RING	01-160-0100	01-160-0100
35E	1	1	BEARING	01-100-0040	01-100-0040
35F	1	1	SHIFT COLLAR	71-004-0772	71-004-0772
35G	1	1	SHIFTER FORK & LEVER	71-004-1019	71-004-1019
35H	1	1	RETAINING RING	01-160-0040	01-160-0040
35J	1	1	BEARING - TOP CASE	71-004-0151	71-004-0151
35K	1	1	SNAP RING	01-160-0330	01-160-0330
35L	1	1	SHIFTER SHAFT	71-004-1020	71-004-1020
35M	2	1	DOWEL	01-152-0070	01-152-0070
(35N)	1	1	76 TORSION SPRING - STANDARD	01-261-0561	01-261-0561
(35N)	1	1	76 TORSION SPRING - LIGHT DUTY	01-261-0562	01-261-0562
37	-	(1)	BAIL ASSEMBLY	-	-
37	1	1	BAIL ASSEMBLY 1-1/4 BOSS	71-005-0252	71-005-0252
37	1	1	BAIL ASSEMBLY 1-1/2 BOSS	71-005-0932	71-005-0932
50	1	1	MOTOR	**	**



\*\* PART SPECIFIED BY CUSTOMER  
X76BA & 76BC ECN 3690 REV: B 06-04-14 HWP