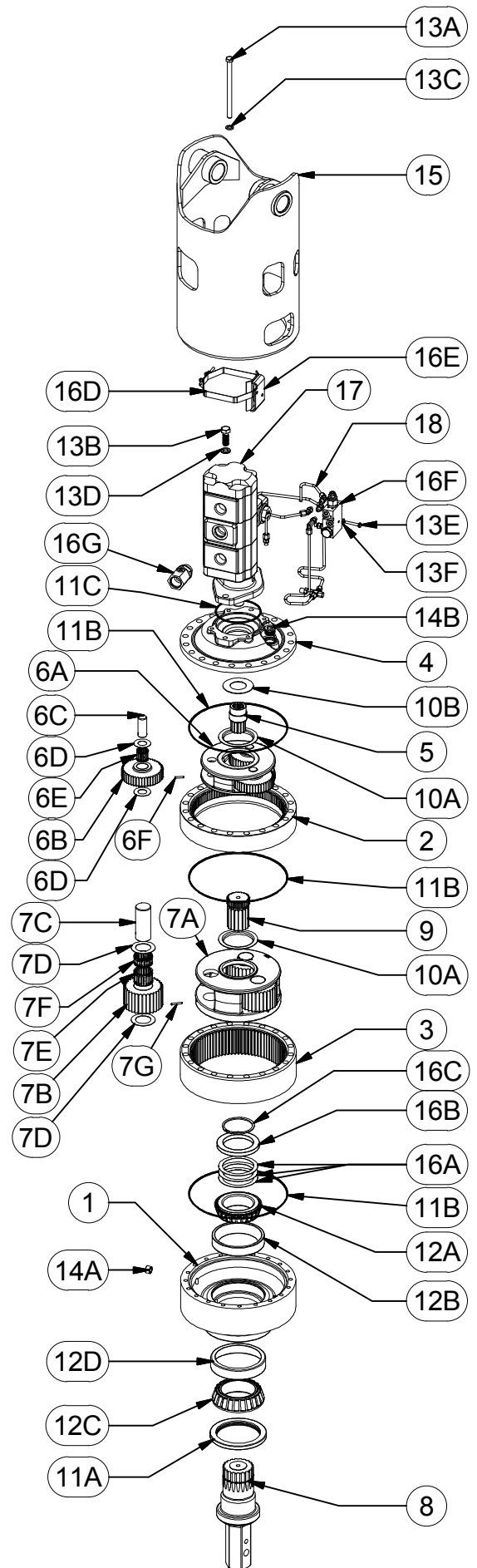


KICKDOWN MODEL 75 SERIES (HYDRASYNC) AUGER DRIVE

GROUP	ITEM	QTY	DESCRIPTION	51.43:1	40.25:1	37.80:1	29.58:1
	1	1	BEARING CARRIER	75-004-3012	75-004-3012	75-004-3012	75-004-3012
	2	1	RING GEAR- PRI	25-004-1012	25-004-1012	25-004-1012	25-004-1012
	3	1	RING GEAR- SEC	25-004-1022	25-004-1022	25-004-1022	25-004-1022
	4	1	COVER	25-004-1222	25-004-1222	25-004-1222	25-004-1222
	5	1	INPUT GEAR	25-004-1162	25-004-1162	25-004-1172	25-004-1172
6	-	1	CARRIER ASSY-PRI	25-005-2001	25-005-2001	25-005-2011	25-005-2011
	6A	1	CARRIER - PRI	25-004-1032	25-004-1032	25-004-1042	25-004-1042
	6B	3	PLANET GEAR - PRI	25-004-1102	25-004-1102	25-004-1112	25-004-1112
	6C	3	PLANET SHAFT - PRI	25-004-1031	25-004-1031	25-004-1031	25-004-1031
	6D	6	THRUST WASHER - PLANETS	81-004-1561	81-004-1561	81-004-1561	81-004-1561
	6E	3	BEARING	01-105-0570	01-105-0570	01-105-0570	01-105-0570
	6F	3	ROLL PIN	01-153-0020	01-153-0020	01-153-0020	01-153-0020
7	-	1	CARRIER ASSY - SEC	25-005-2031	25-005-2041	25-005-2031	25-005-2041
	7A	1	CARRIER - SEC	25-004-1062	25-004-1072	25-004-1062	25-004-1072
	7B	3	PLANET GEAR - SEC	25-004-1082	25-004-1092	25-004-1082	25-004-1092
	7C	3	PLANET SHAFT	25-004-1021	25-004-1021	25-004-1021	25-004-1021
	7D	6	PLANET WASHER	25-004-1041	25-004-1041	25-004-1041	25-004-1041
	7E	3	BEARING	01-105-0550	01-105-0550	01-105-0550	01-105-0550
	7F	3	BEARING	01-105-0560	01-105-0560	01-105-0560	01-105-0560
	7G	3	ROLL PIN	01-153-0190	01-153-0190	01-153-0190	01-153-0190
8	-	1	SHAFTS	-	-	-	-
	-	-	OUTPUT SHAFT - 2-5/8 HEX	75-004-4022	75-004-4022	75-004-4022	75-004-4022
	-	-	OUTPUT SHAFT - 3" HEX	75-004-4012	75-004-4012	75-004-4012	75-004-4012
	9	1	SUN GEAR - SEC.	25-004-1142	25-004-1152	25-004-1142	25-004-1152
10	-	-	THRUST WASHERS	-	-	-	-
	10A	2	CARRIER THRUST WASHER	25-004-1132	25-004-1132	25-004-1132	25-004-1132
	10B	1	INPUT THRUST WASHER	81-004-2883	81-004-2883	81-004-2883	81-004-2883
11	-	-	SEALS & O-RINGS	-	-	-	-
	11A	1	OUTPUT SHAFT SEAL	01-405-0500	01-405-0500	01-405-0500	01-405-0500
	11B	3	O-RING	01-402-0020	01-402-0020	01-402-0020	01-402-0020
	11C	1	O-RING	01-402-0010	01-402-0010	01-402-0010	01-402-0010
12	-	-	OUTPUT SHAFT BEARINGS	-	-	-	-
	12A	1	INNER BEARING CONE	01-102-0250	01-102-0250	01-102-0250	01-102-0250
	12B	1	INNER BEARING CUP	01-103-0250	01-103-0250	01-103-0250	01-103-0250
	12C	1	OUTER BEARING CONE	01-102-0120	01-102-0120	01-102-0120	01-102-0120
	12D	1	OUTER BEARING CUP	01-103-0110	01-103-0110	01-103-0110	01-103-0110
13	-	-	HARDWARE	-	-	-	-
	13A	20	HEX HEAD CAP SCREW (1/2-13 X 7.5)	01-150-1660	01-150-1660	01-150-1660	01-150-1660
	13B	2	HHCS (5/8-11 X 1-3/4)	01-150-0110	01-150-0110	01-150-0110	01-150-0110
	13C	20	FLATWASHER - HDN (1/2 X 7/8 X 1/8)	01-166-0120	01-166-0120	01-166-0120	01-166-0120
	13D	2	LOCKWASHER - 5/8 ZINC PLATED	01-166-0040	01-166-0040	01-166-0040	01-166-0040
	13E	2	HHCS (1/4-20 X 1.75)	01-150-1690	01-150-1690	01-150-1690	01-150-1690
	13F	2	FLAT WASHER (1/4)	01-166-0390	01-166-0390	01-166-0390	01-166-0390
14	-	-	PLUGS AND GREASE FITTINGS	-	-	-	-
	14A	1	PLUG - 1/2 NPT MAGNETIC	01-207-0041	01-207-0041	01-207-0041	01-207-0041
	14B	1	HOLLOW HEX PLUG (05HP-12)	01-208-0030	01-208-0030	01-208-0030	01-208-0030
15	-	1	BAIL ASSEMBLIES	-	-	-	-
	-	-	2" BOSS - BACKHOE M50 MOTORS	75-005-2222	75-005-2222	75-005-2222	75-005-2222
	-	-	1.5" BOSS, M50 MOTORS	75-005-2082	75-005-2082	75-005-2082	75-005-2082
	-	-	2" BOSS M50 MOTORS	75-005-2222	75-005-2222	75-005-2222	75-005-2222
16	-	-	MISCELLANEOUS	-	-	-	-
	16A	*	SHIM	25-004-1051	25-004-1051	25-004-1051	25-004-1051
	16B	1	SUPPORT RING (250)	25-004-1061	25-004-1061	25-004-1061	25-004-1061
	16C	1	RETAINING RING	01-160-0600	01-160-0600	01-160-0600	01-160-0600
	16D	1	BAND CLAMP	01-365-0020	01-365-0020	01-365-0020	01-365-0020
	16E	1	BRACKET	01-360-0040	01-360-0040	01-360-0040	01-360-0040
	16F	1	VALVE BODY 2-DIRECTION	01-308-0150	01-308-0150	01-308-0150	01-308-0150
	16G	1	FITTING-16-16 TO -4 KICKDOWN	01-316-0020	01-316-0020	01-316-0020	01-316-0020
17	-	1	MOTORS	-	-	-	-
	-	-	MOTOR - C.S. M50 1.5 X 2.5 (HI) (SPL SEAL)	01-304-0600	01-304-0600	01-304-0600	01-304-0600
	-	-	MOTOR - C.S. M51 2.5 X 2.5 (HI) (SPL SEAL)	01-304-0610	01-304-0610	01-304-0610	01-304-0610
18	-	1	TUBE KIT	-	-	-	-
	-	-	KIT - TUBE ASSY. & FITTING KICKDOWN 60	01-309-0600	01-309-0600	01-309-0600	01-309-0600
	-	-	KIT - TUBE ASSY. & FITTING KICKDOWN 61	01-309-0610	01-309-0610	01-309-0610	01-309-0610



* NUMBER OF SHIMS DEPENDANT UPON BEARING PRELOAD.