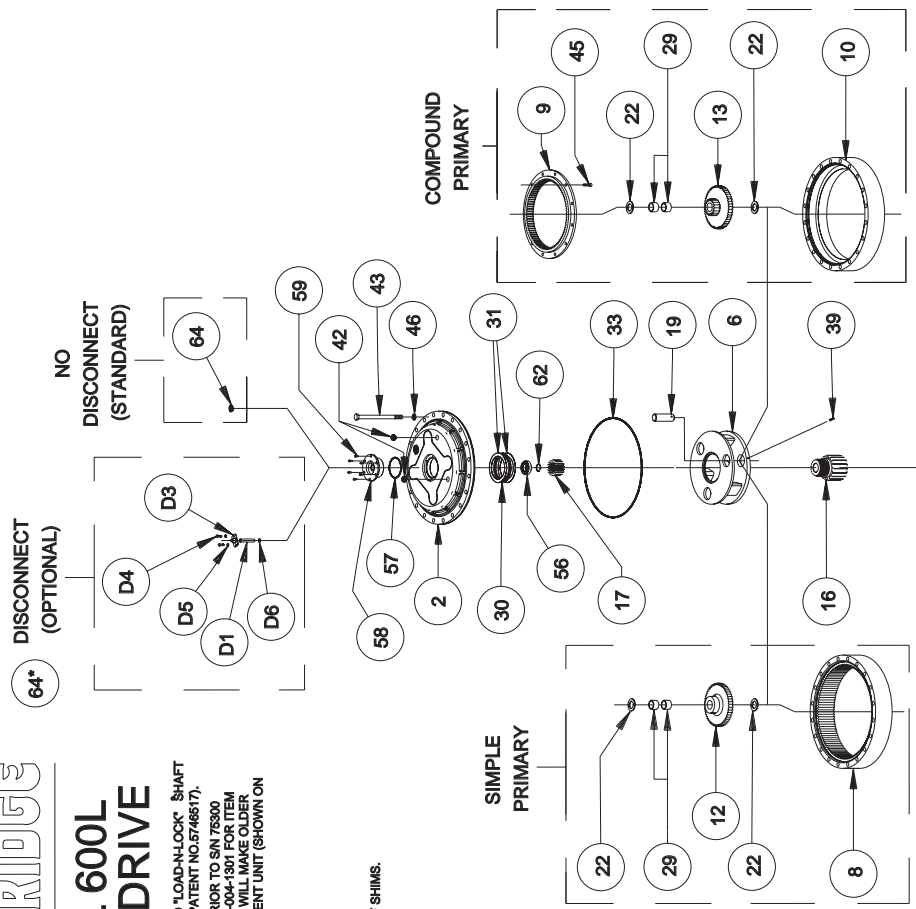
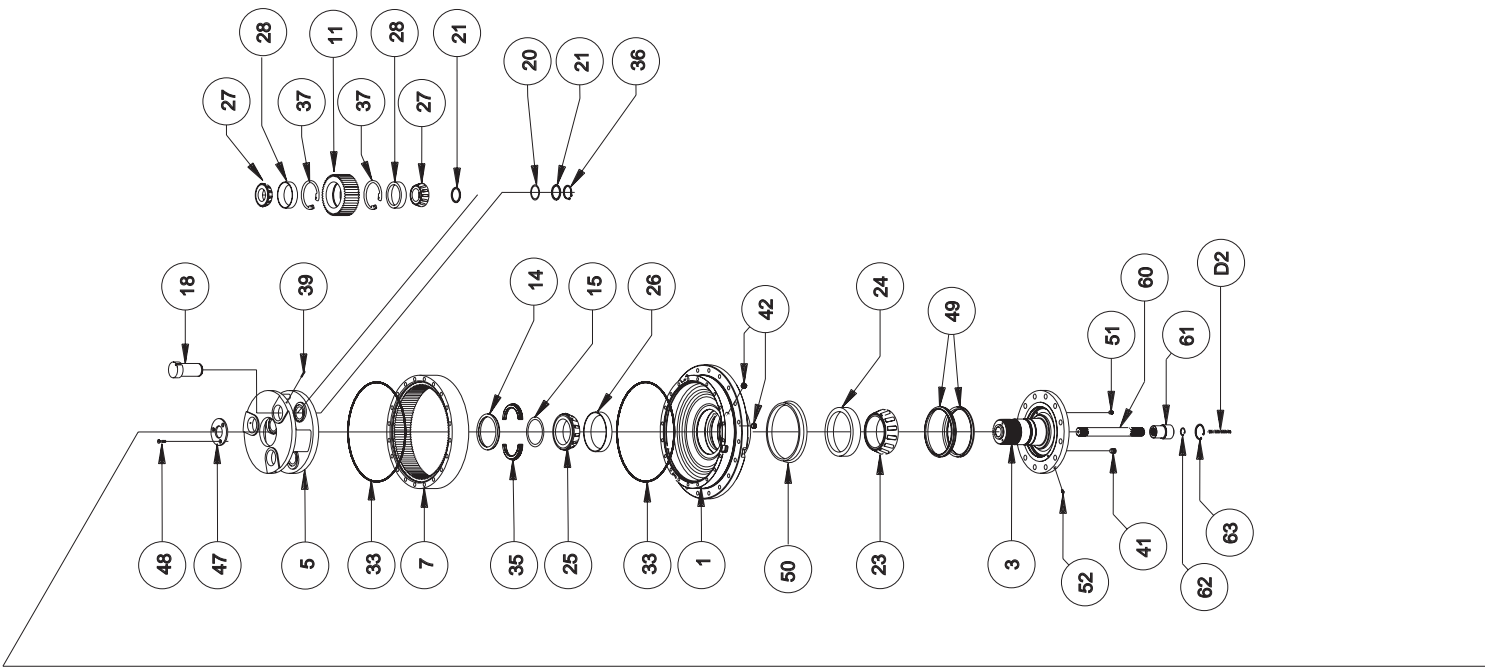




MODEL 600L WHEEL DRIVE

EQUIPPED WITH PATENTED "LOAD-LOCK" SHAFT RETENTION SYSTEM (U.S. PATENT NO. 6746617).
 *UNITS MANUFACTURED PRIOR TO SN 76300 UTILIZE (OBSOLETE) P/N 60-004-1301 FOR ITEM 16. P/N 60-004-1301 IS IDENTICAL TO CURRENT UNIT (SHOWN ON THIS DRAWING).
 EFFECTIVE FROM SN 76300 08-01-08 TO (CURRENT)

NOTES:
 -J- BEARING PRELOAD DETERMINES QUANTITY OF SHIMS.
 SEAL KIT (P/N 60-016-2101) INCLUDES:
 3 EA- ITEM (33) O-RINGS
 1 EA- ITEM (48) SEAL AND
 1 EA- ITEM (50) SEAL BOOT.



X600LW2-AC DATE 02-18-08

			RATIOS →			SIMPLE PRIMARY			COMPOUND PRIMARY	
			23.66:1	37.56:1	59.29:1	69.39:1	109.08:1			
<h1>MODEL 600L WHEEL DRIVE</h1>										
BASE	ITEM	QTY.	DESCRIPTION	PART NUMBER	PART NUMBER	PART NUMBER	PART NUMBER	PART NUMBER		
	1	1	CODE F - FLANGELESS	60-004-3034	60-004-3034	60-004-3034	60-004-3034	60-004-3034		
			CODE A - FLANGED	60-004-3044	60-004-3044	60-004-3044	60-004-3044	60-004-3044		
			600C_ - CUSTOM MTG - PER CUSTOMER SPECS.							
	2	1	COVER	60-004-1444	60-004-1444	60-004-1444	60-004-1444	60-004-1444		
SPINDLE SHAFT	3	1	CODE W1C - 17" DIA.; 12X 1 1/8 - 12 UNF-2B	60-004-4172L	60-004-4172L	60-004-4172L	60-004-4172L	60-004-4172L		
			CODE W1D - 17" DIA.; 12X 1 1/8 - 12 UNF-2B	60-004-4072L	60-004-4072L	60-004-4072L	60-004-4072L	60-004-4072L		
			CODE W1C1 - CUSTOM							
	5	1	CARRIER - SECONDARY	60-004-1044	60-004-1054	60-004-1054	60-004-1044	60-004-1054		
	6	1	CARRIER - PRIMARY	60-004-1014	60-004-1014	60-004-1024	60-004-1024	60-004-1024		
	7	1	RING GEAR - SECONDARY	60-004-1193	60-004-1193	60-004-1193	60-004-1193	60-004-1193		
	8	-	RING GEAR - SIMPLE PRIMARY	60-004-1193	60-004-1193	60-004-1193	-	-		
	9	1	RING GEAR - COMPOUND PRIMARY	-	-	-	60-004-1213	60-004-1213		
	10	1	RING SPACER - PRIMARY	-	-	-	60-004-1253	60-004-1253		
	11	3	PLANET GEAR - SECONDARY	60-004-1092	60-004-1112	60-004-1112	60-004-1092	60-004-1112		
	12	-	PLANET GEAR - PRIMARY	60-004-1132	60-004-1132	60-004-1152	-	-		
	13	3	CLUSTER GEAR	-	-	-	60-004-1162	60-004-1162		
	14	1	LOCK RING - SHAFT BEARING	60-004-1472	60-004-1472	60-004-1472	60-004-1472	60-004-1472		
	15	-J-	SHIM(S) - SHAFT	60-004-1311	60-004-1311	60-004-1311	60-004-1311	60-004-1311		
	16	1	SUN GEAR	60-004-1362	60-004-1362	60-004-1702	60-004-1362	60-004-1702		
	17	1	PRIMARY SUN GEAR (13T;8/16 SPLINE) HOLLOW	60-004-1802	60-004-1812	60-004-1812	60-004-1812	60-004-1812		
	18	3	PLANET SHAFT-SECONDARY	60-004-1262	60-004-1262	60-004-1262	60-004-1262	60-004-1262		
	19	3	PLANET SHAFT-PRIMARY	60-004-1272	60-004-1272	60-004-1272	60-004-1272	60-004-1272		
	20	-J-	SHIM(S) - SECONDARY PLANET	60-004-1321	60-004-1321	60-004-1321	60-004-1321	60-004-1321		
	21	6	WASHER - SECONDARY PLANET	60-004-1291	60-004-1291	60-004-1291	60-004-1291	60-004-1291		
	22	6	WASHER - PRIMARY PLANET	60-004-1881	60-004-1881	60-004-1881	60-004-1881	60-004-1881		
	23	1	BEARING CONE - SHAFT OUTER	01-102-0190	01-102-0190	01-102-0190	01-102-0190	01-102-0190		
	24	1	BEARING CUP - SHAFT OUTER	01-103-0190	01-103-0190	01-103-0190	01-103-0190	01-103-0190		
	25	1	BEARING CONE - SHAFT INNER	01-102-0230	01-102-0230	01-102-0230	01-102-0230	01-102-0230		
	26	1	BEARING CUP - SHAFT INNER	01-103-0230	01-103-0230	01-103-0230	01-103-0230	01-103-0230		
	27	6	CONE - SEC.PLANET	01-102-0210	01-102-0210	01-102-0210	01-102-0210	01-102-0210		
	28	6	CUP - SEC.PLANET	01-103-0210	01-103-0210	01-103-0210	01-103-0210	01-103-0210		
	29	6	BRG-PRIMARY PLANET	01-105-0510	01-105-0510	01-105-0510	01-105-0510	01-105-0510		
	30	1	BRG-PRI. CARR. THRUST	01-112-0340	01-112-0340	01-112-0340	01-112-0340	01-112-0340		
	31	2	RACE-PRI. CARR. THRUST	01-112-0350	01-112-0350	01-112-0350	01-112-0350	01-112-0350		
	33	3	O-RING - RING GEAR	01-402-0660	01-402-0660	01-402-0660	01-402-0660	01-402-0660		
	35	1	SPLIT RING	60-004-1482	60-004-1482	60-004-1482	60-004-1482	60-004-1482		
	36	3	RETAINING RING- SEC. PIN	01-160-0490	01-160-0490	01-160-0490	01-160-0490	01-160-0490		
	37	6	RETAINING RING-SEC. PLNT.	01-160-0500	01-160-0500	01-160-0500	01-160-0500	01-160-0500		
	39	6	ROLL PIN - PRI. 1/4 X 1 3/8	01-153-0150	01-153-0150	01-153-0150	01-153-0150	01-153-0150		
	41	1	PIPE PLUG 1/4 NPT	01-207-0020	01-207-0020	01-207-0020	01-207-0020	01-207-0020		
	42	6	PIPE PLUG 3/4 NPT MAGNETIC	01-207-0100	01-207-0100	01-207-0100	01-207-0100	01-207-0100		
	43	20	H.H.C.S 3/4-10 X 10.5 GRD 8	01-150-1580	01-150-1580	01-150-1580	01-150-1580	01-150-1580		
	45	12	S.H.C.S 1/2-13 X 1.5 GRD 8	-	-	-	01-150-0570	01-150-0570		
	46	20	LOCKWASHER - 3/4	01-166-0360	01-166-0360	01-166-0350	01-166-0350	01-166-0350		
	47	1	PLATE - SEC CARRIER RETAINER	60-004-1352	60-004-1352	60-004-1352	60-004-1352	60-004-1352		
	48	3	FLAT HD. SOC. C.S. 3/8-24 X 1 GR8	01-150-1590	01-150-1590	01-150-1590	01-150-1590	01-150-1590		
	49	1	SEAL - METAL FACE	01-406-0010	01-406-0010	01-406-0010	01-406-0010	01-406-0010		
	50	1	SEAL - RUBBER FACE	01-406-0020	01-406-0020	01-406-0020	01-406-0020	01-406-0020		
	51	1	PIPE PLUG (1/8 NPT-HOLLOW HEX)	01-207-0030	01-207-0030	01-207-0030	01-207-0030	01-207-0030		
	52	1	GREASE FITTING-STRAIGHT, 1/8 NPT	01-215-0010	01-215-0010	01-215-0010	01-215-0010	01-215-0010		
SPINDLE ADAPT.	53	1	CODE 3: 14T, 12/24 D.P., LONG SHAFT (OPTIONAL)	98-005-1141	98-005-1141	98-005-1141	98-004-1141	98-004-1141		
			CODE 4: 14T, 12/24 D.P. (OPTIONAL)	60-004-1943	60-004-1943	60-004-1943	60-004-1943	60-004-1943		
			CODE 7: 17T, 12/24 D.P. (OPTIONAL)	60-004-1944	60-004-1944	60-004-1944	60-004-1944	60-004-1944		
	54	(1)	CODE V - AIR VENT; 1/8 NPT (OPTIONAL)	01-216-0030	01-216-0030	01-216-0030	01-216-0030	01-216-0030		
	55	(1)	ADAPTER; 3/4" NPT-M, 1/8" NPT - F (OPTIONAL)	01-201-0530	01-201-0530	01-201-0530	01-201-0530	01-201-0530		
	56	1	BALL BEARING (7207 WN)	01-100-0320	01-100-0320	01-100-0320	01-100-0320	01-100-0320		
	57	1	O - RING (#242)	01-402-0220	01-402-0220	01-402-0220	01-402-0220	01-402-0220		
	58	1	THRUST HUB	60-004-1822	60-004-1822	60-004-1822	60-004-1822	60-004-1822		
	59	6	SHCS (1/4-20 X 1/2 GR8)	01-150-0560	01-150-0560	01-150-0560	01-150-0560	01-150-0560		
	60	1	INPUT SHAFT - 13T HOLLOW SPINDLE	60-004-1392	60-004-1392	60-004-1392	60-004-1392	60-004-1392		
	61	1	CODE 4, 7 & 8: 16T, 8/16 D.P. INPUT COUPLING	60-004-1422	60-004-1422	60-004-1422	60-004-1422	60-004-1422		
			CODE 3 & 9: 13T, 8/16 D.P. INPUT COUPLING	60-004-1692	60-004-1692	60-004-1692	60-004-1692	60-004-1692		
	62	2	RETAINING RING (#5000-150)	01-160-0580	01-160-0580	01-160-0580	01-160-0580	01-160-0580		
	63	1	RETAINING RING (#5000-300)	01-160-0060	01-160-0060	01-160-0060	01-160-0060	01-160-0060		
	64	1	PLUG SAE #14 (MODELS W/OUT DISCONNECT)	01-208-0080	01-208-0080	01-208-0080	01-208-0080	01-208-0080		
			DISCONNECT OPTION KIT (ITEMS D1-D6)	60-005-2143	60-005-2143	60-005-2143	60-005-2143	60-005-2143		
	D1	1	DOWEL PIN (5/8 x 3-1/2)	01-152-0130	01-152-0130	01-152-0130	01-152-0130	01-152-0130		
	D2	1	SPRING 6.0 x .75 x .54 x 23 lb/in	01-261-0550	01-261-0550	01-261-0550	01-261-0550	01-261-0550		
	D3	1	DISCONNECT PLATE	60-004-1832	60-004-1832	60-004-1832	60-004-1832	60-004-1832		
	D4	2	HHCS; 5/16-18 x 1 GR5	01-150-1790	01-150-1790	01-150-1790	01-150-1790	01-150-1790		
	D5	2	LOCKWASHER (5/16)	01-166-0110	01-166-0110	01-166-0110	01-166-0110	01-166-0110		
	D6	1	O-RING (#016)	01-402-0900	01-402-0900	01-402-0900	01-402-0900	01-402-0900		