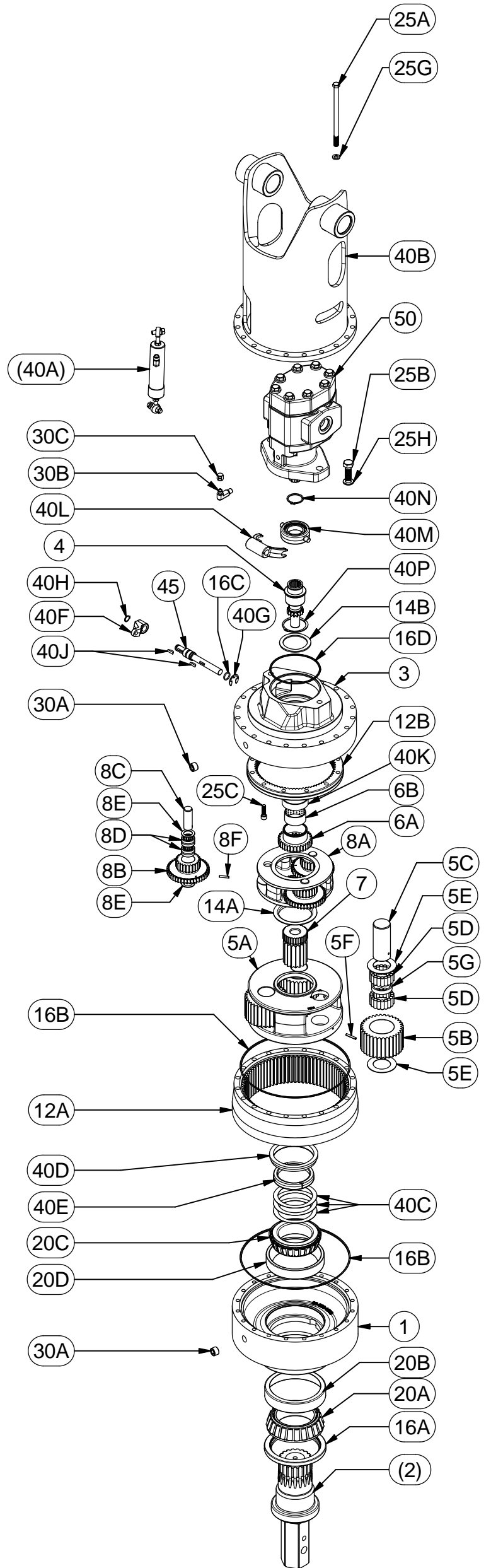




EFFECTIVE  
FROM: SN 120,000 DATE: 03-18-14  
TO: CURRENT

## MODEL 34BA

Parts List				
GROUP	ITEM	QTY	PART NUMBER	DESCRIPTION
	1	1	34-004-3001	BEARING CARRIER
2	-	-	-	OUTPUT SHAFT
	(2)	(1)	75-004-4022L	2-5/8 HEX OUTPUT SHAFT
	(2)	(1)	75-004-4012L	3" HEX OUTPUT SHAFT
	3	1	34-004-1004	CASE: STD. (2 SPEED)
	4	1	34-004-1001	SHIFTER GEAR
5	-	(1)	25-005-2221	CARRIER ASSY - SEC
	5A	1	25-004-1472	CARRIER - SEC
	5B	3	25-004-1853	PLANET GEAR - SEC.
	5C	3	25-004-1432	PLANET PIN (SEC)
	5D	108	01-106-0010	ROLLER
	5E	6	25-004-1462	PLANET WASHER (251 SEC)
	5F	3	01-153-0190	ROLL PIN
	5G	3	25-004-1452	SPACER
6	-	1	34-005-2006	SUN GEAR ASSEMBLY
	6A	1	34-004-1002	SUN GEAR-PRIMARY
	6B	1	01-127-0010	BUSHING
	7	1	25-004-1854	SUN GEAR - SEC.
8	-	(1)	34-005-2001	CARRIER ASSEMBLY - PRI
	8A	1	71-004-0433	CARRIER
	8B	3	34-004-1003	CLUSTER GEAR
	8C	3	71-004-0121	PLANET SHAFT (PRIMARY)
	8D	6	01-105-0010	BEARING
	8E	6	71-004-0861	PLANET WASHER
	8F	3	01-153-0020	ROLL PIN
12	-	-	-	RING GEARS
	12A	1	34-004-1005	RING GEAR SECONDARY
	12B	1	34-004-1006	RING GEAR- PRIMARY
14	-	-	-	THRUST WASHERS AND BEARINGS
	14A	1	25-004-1132	CARRIER THRUST WASHER
	14B	1	01-112-0030	THRUST RACE
16	-	-	-	SEALS & O-RINGS
	16A	1	01-405-0740	SEAL
	16B	2	01-402-0020	O-RING
	16C	1	01-402-0040	O-RING - SHIFTER SHAFT
	16D	1	01-402-0010	O-RING
20	-	-	-	OUTPUT SHAFT BEARINGS
	20A	1	01-102-0120	BEARING CONE
	20B	1	01-103-0110	BEARING CUP
	20C	1	01-102-0250	INNER BEARING CONE
	20D	1	01-103-0250	INNER BEARING CUP
25	-	-	-	HARDWARE
	25A	20	01-150-1990	HHCS (7/16-20 x 7.5) GR8
	25B	2	01-150-0110	HHCS (5/8-11 X 1-3/4)
	25C	12	01-150-0520	SHCS (3/8-16 X 1-1/4 GR8)
	25G	20	01-166-0340	7/16 LOCK WASHER
	25H	2	01-166-0040	LOCKWASHER - 5/8 ZINC PLATED
30	-	-	-	PLUGS & FITTINGS
	30A	2	01-207-0041	PLUG - 1/2 NPT MAG
	30B	1	01-203-0031	ELBOW: 1/4 NPT X 90 1/4 JIC
	30C	1	01-203-0032	CAP
40	-	-	-	MISCELLANEOUS
	(40A)	(1)	71-002-0601	SINGE ACTING (STD) HYD
	(40A)	(1)	71-002-1351	SINGLE ACTING (HD) HYD
	40B	1	34-005-2007	BAIL ASSEMBLY
	40C	*	25-004-1051	SHIM
	40D	1	25-004-1192	LOCK RING
	40E	1	25-004-1182	SPLIT RING
	40F	1	71-004-0241	SHIFT LEVER
	40G	1	01-160-0330	SNAP RING
	40H	1	01-160-0340	SNAP RING
	40J	2	01-155-0080	WOODRUFF KEY
	40K	1	71-004-0151	BEARING - TOP CASE
	40L	1	71-004-0282	SHIFTER FORK
	40M	1	71-005-1751	SHIFT COLLAR ASSEMBLY
	40N	1	01-160-0110	RETAINING RING
	40P	1	01-160-0040	RETAINING RING
	45	1	71-004-0292	SHIFTER SHAFT
	50	1	01-304-0940	MOTOR



\*BEARING PRELOAD DETERMINES QUANTITY OF SHIMS  
X34L REV: A 03-06-14 HWP  
SEAL KIT PN 34-016-2011