

28LP Double Stage Exploded View Drawing

ESKRIDGE MODEL 28LP

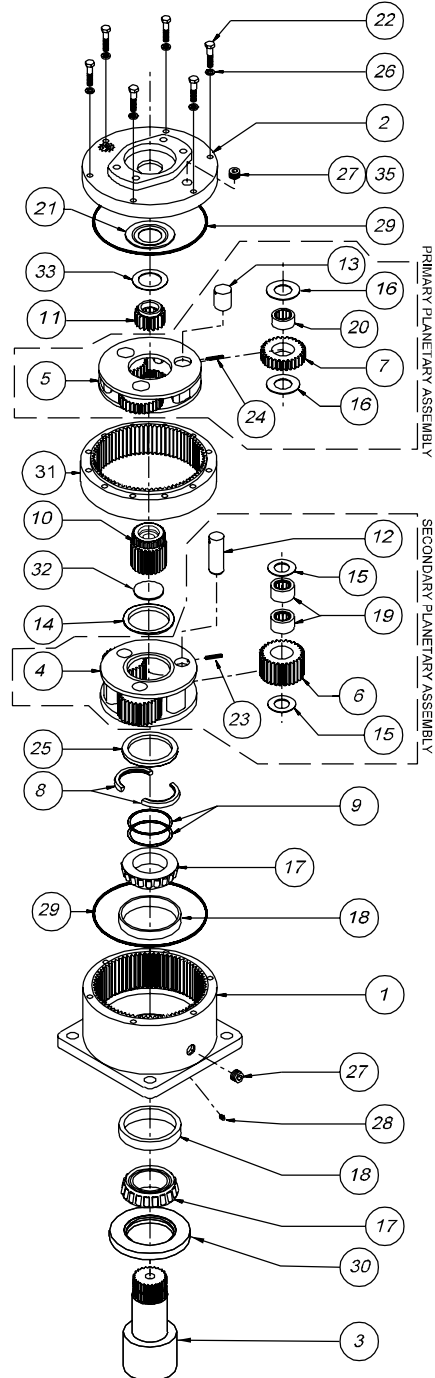
EQUIPPED WITH PATENTED "LOAD-N-LOCK"®
SHAFT RETENTION SYSTEM.
(U.S. PATENT NO. 5746517).

EFFECTIVE
FROM: S/N 16401 07-01-93
TO: (CURRENT)

DOUBLE PLANETARY

RATIO	16.65:1 4.08 4.08	20.62:1 5.05 4.08	20.62:1 4.08 5.05	25.53:1 5.05 5.05
			INVERTED	

MDC	DESCRIPTION	ITEM	QTY.	PART NUMBER			
				16.65:1	20.62:1	20.62:1	25.53:1
	B28 CASE-SQUARE- (NO ZERK)	1	1	28-004-3504	28-004-3504	28-004-3504	28-004-3504
	B28 CASE-SQUARE- W/ZERK (28)			28-004-3504Z	28-004-3504Z	28-004-3504Z	28-004-3504Z
	C28 CASE-CUST.MTG PER CUSTOMER SPECS.			-	-	-	-
A	COVER-SAE 'A'			85-004-1513	85-004-1513	85-004-1513	85-004-1513
B	COVER-SAE 'B' 2-BOLT	2	1	85-004-1503	85-004-1503	85-004-1503	85-004-1503
C	COVER-SAE 'C' 4-BOLT			28-004-1013	28-004-1013	28-004-1013	28-004-1013
F1	SHAFT - 1.5" DIA. X 3/8 KEY - INTERNAL	3	1	20-004-4122L	20-004-4122L	20-004-4122L	20-004-4122L
F2	SHAFT - 2" DIA. X 1/2 KEY - INTERNAL			20-004-4112L	20-004-4112L	20-004-4112L	20-004-4112L
C1	SHAFT-CUSTOM PER CUSTOMER SPECS.			-	-	-	-
	CARRIER-SECONDARY	4	1	50-004-1062	50-004-1062	50-004-1052	50-004-1052
	CARRIER-PRIMARY	5	1	50-004-1082	50-004-1072	50-004-1082	50-004-1072
	PLANET GEAR-SEC.	6	3	85-004-1051	85-004-1051	85-004-1041	85-004-1041
	PLANET GEAR-PRI.	7	3	85-004-1031	85-004-1021	85-004-1031	85-004-1021
	SPLIT RING (MATCHING HALVES)	8	1	20-004-1362	20-004-1362	20-004-1362	20-004-1362
	SHIM	9	*	20-004-1091	20-004-1091	20-004-1091	20-004-1091
	SUN GEAR-SECONDARY	10	1	85-004-1412	85-004-1092	85-004-1072	85-004-1072
1	INPUT GEAR 21T, 20/40 D.P. SPLINE			85-004-1402		85-004-1402	N/A
2	INPUT GEAR 13T, 16/32 D.P. SPLINE			85-004-1102	85-004-1062		85-004-1062
3	INPUT GEAR SAE 1"-6B SPLINE			85-004-1122	85-004-1122		85-004-1122
4	INPUT GEAR 14T, 12/24 D.P. SPLINE			85-004-1533		85-004-1533	N/A
5	INPUT GEAR 15T, 16/32 D.P. SPLINE			85-004-1542	85-004-1422		85-004-1422
6	INPUT GEAR 1" DIA X .25" KEY			85-004-1582		85-004-1582	N/A
	PLANET SHAFT-SECONDARY	12	3	71-004-0121	71-004-0121	71-004-0121	71-004-0121
	PLANET SHAFT-PRIMARY	13	3	81-004-0071	81-004-0071	81-004-0071	81-004-0071
	THRUST WASHER-SEC.CUP	14	1	50-004-1011	50-004-1011	50-004-1011	50-004-1011
	THRUST WASHER-(SEC.PLANET GEAR)	15	6	85-004-1181	85-004-1181	85-004-1181	85-004-1181
	THRUST WASHER-(SECONDARY PLANET GEAR)	16	6	85-004-1561	85-004-1561	85-004-1561	85-004-1561
	BEARING CONE	17	2	01-102-0160	01-102-0160	01-102-0160	01-102-0160
	BEARING CUP	18	2	01-103-0160	01-103-0160	01-103-0160	01-103-0160
	BEARING-SEC.PLANET	19	6	01-105-0010	01-105-0010	01-105-0010	01-105-0010
	BEARING-PRI.PLANET	20	3	01-105-0410	01-105-0410	01-105-0410	01-105-0410
	THRUST WASHER-INPUT	21	1	50-004-1091	50-004-1091	50-004-1091	50-004-1091
	HEX CAPSCREW 5/16-18 X 1.5 GR8	22	6	01-150-1490	01-150-1490	01-150-1490	01-150-1490
	ROLLPIN-SECONDARY 3/16 X 7/8	23	3	01-153-0210	01-153-0210	01-153-0210	01-153-0210
	ROLLPIN-PRIMARY 1/8 X 1	24	3	01-153-0080	01-153-0080	01-153-0080	01-153-0080
	LOCK RING	25	1	20-004-1372	20-004-1372	20-004-1372	20-004-1372
	LOCKWASHER 5/16 MED	26	6	01-166-0110	01-166-0110	01-166-0110	01-166-0110
	PIPE PLUG-MAG. 3/8 NPT-SOC HD	27	2	01-207-0070	01-207-0070	01-207-0070	01-207-0070
	GREASE FITTING (OPTIONAL)	28	(1)	01-215-0050	01-215-0050	01-215-0050	01-215-0050
	O-RING 167 MM X 3 MM	29	2	01-402-0560	01-402-0560	01-402-0560	01-402-0560
	SEAL-SHAFT	30	1	01-405-0610	01-405-0610	01-405-0610	01-405-0610
	RING GEAR	31	1	85-004-1313	85-004-1313	85-004-1313	85-004-1313
	THRUST BEARING	32	1	28-004-1021	28-004-1021	28-004-1021	28-004-1021
	THRUST BEARING	33	1	01-112-0230	01-112-0230	01-112-0230	01-112-0230
	AIR VENT 3/8 NPT (OPTIONAL)	35	(1)	01-216-0070	01-216-0070	01-216-0070	01-216-0070
	-	-	-	-	-	-	-



NOTE * BEARING PRELOAD DETERMINES QUANTITY OF SHIMS.

SEAL KIT; P/N 20-016-0501; INCLUDES ITEMS 29 AND 30.

▶ INVERTED RATIOS REQUIRED WITH INPUT CODES 1,4,8,6.