



# 440 Gear Drive - Wheel Drive

Typical Applications: Industrial, Marine or Mobile Equipment

(913) 782-1238 (Tel)  
 (913) 782-4206 (Fax)  
[Sales@EskridgeInc.com](mailto:Sales@EskridgeInc.com)  
[www.EskridgeInc.com](http://www.EskridgeInc.com)  
 FORM: PS440W\_0807  
 Page 1 of 3

## Performance Ratings

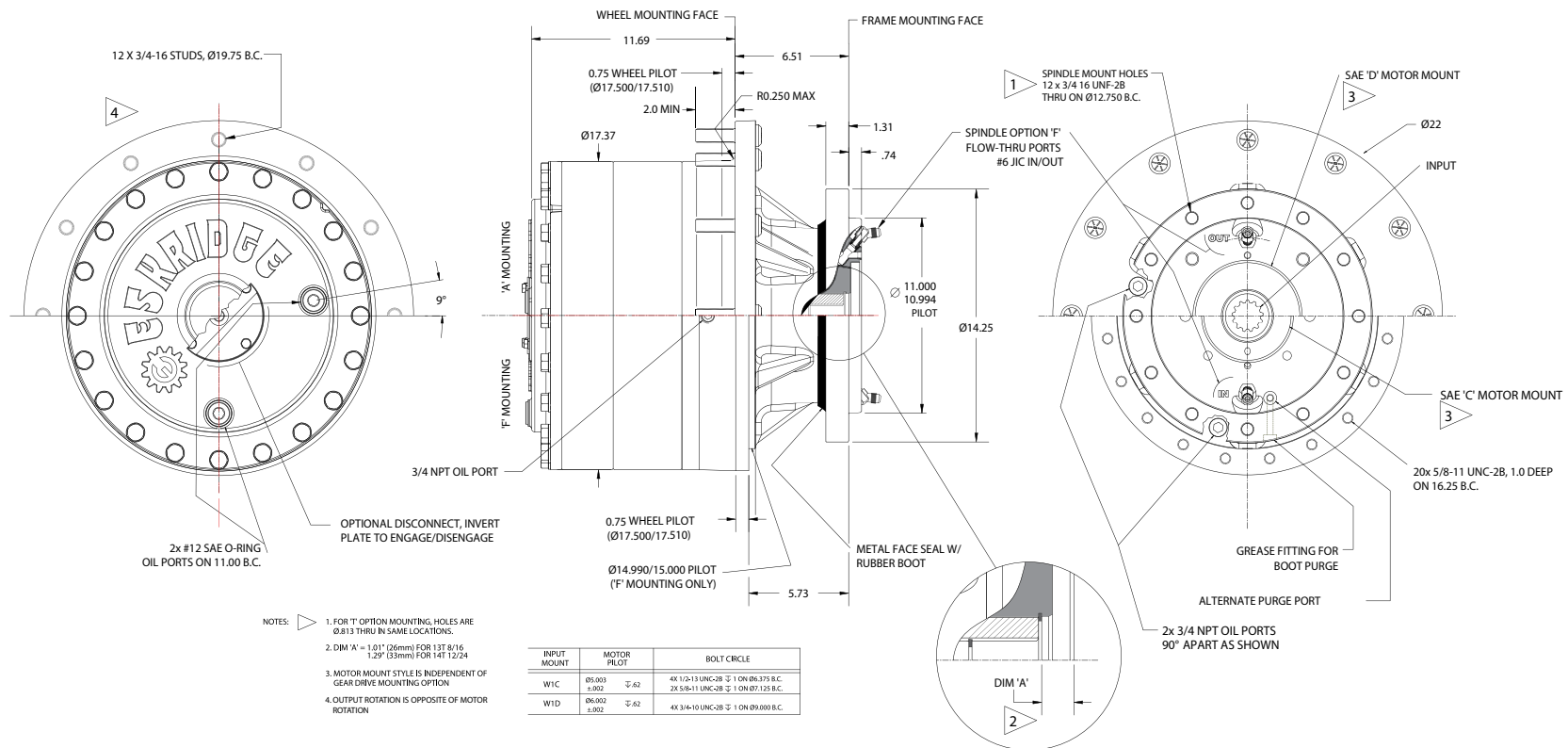
Maximum Intermittent Output Torque ..... 440,000 in-lb (49,720 N-m)  
 Continuous Output Torque ..... 220,000 in-lb (24,860 N-m)  
 Peak Torque Rating..... Consult Eskridge  
 Maximum Input Speed (No Load)..... 3,000 RPM

Consult your Eskridge representative to determine ratings for your specific application or configuration.

## General Dimensions for Flanged (ordering option 'A') and Flangeless (ordering option 'F') Wheel Flange

Other options may be available. See ordering information on last page or contact your Eskridge representative for more details.

Values are shown as "inches (millimeters)."





# 440 Gear Drive - Wheel Drive

Typical Applications: Industrial, Marine or Mobile Equipment

(913) 782-1238 (Tel)  
 (913) 782-4206 (Fax)  
[Sales@EskridgeInc.com](mailto:Sales@EskridgeInc.com)  
[www.EskridgeInc.com](http://www.EskridgeInc.com)  
 FORM: PS440W\_0807  
 Page 2 of 3

## Oil Capacities

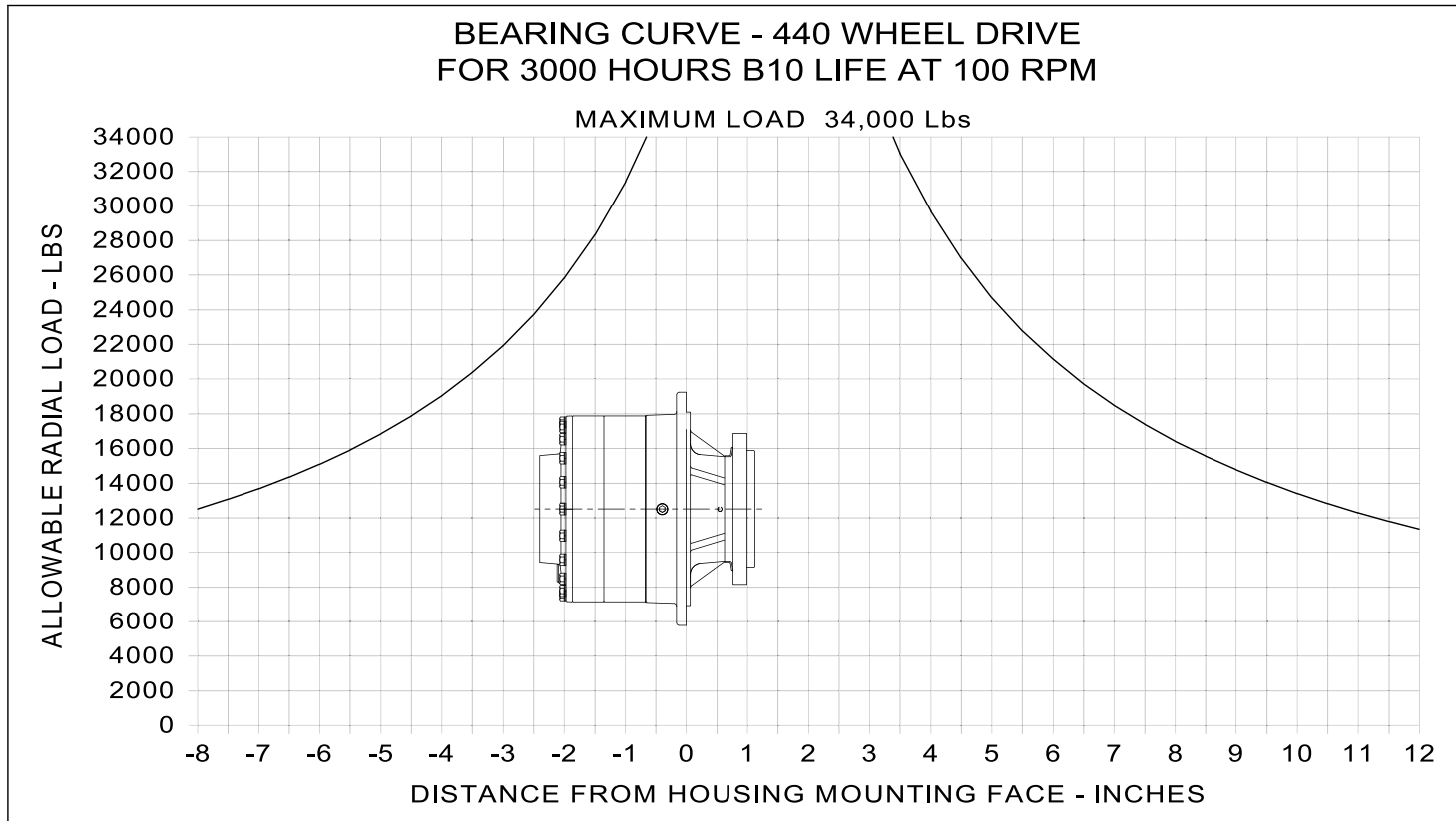
Position	Quantity
Vertical	11.0 quarts/10.4 liters
Horizontal	8.0 quarts/7.6 liters

All units are shipped dry (without oil).

## Approximate Unit Weight

755 lbs / 342 kg - 'A' mounting

715 lbs / 324 kg - 'F' mounting



To adjust for loads and speeds other than those shown on above curve, use this formula:

$$\text{Adjusted Life (hours)} = 3000 \left( \frac{100\text{rpm}}{\text{Speed(Adjusted)}} \right) \times \left( \frac{\text{Load (Curve)}}{\text{Load (Adjusted)}} \right)^{10/3}$$



# 440 Gear Drive - Wheel Drive

Typical Applications: Industrial, Marine or Mobile Equipment

(913) 782-1238 (Tel)  
 (913) 782-4206 (Fax)  
[Sales@EskridgeInc.com](mailto:Sales@EskridgeInc.com)  
[www.EskridgeInc.com](http://www.EskridgeInc.com)  
 FORM: PS440W\_0807  
 Page 3 of 3

## Ordering Information

Example Part Number: 440LAW1C4-18-Z

Model	Shaft Retention	Gear Drive Mounting	Frame (Spindle) Mount	Input Spline	Ratio	Options
440	L				-	
	<p>L - Load-N-Lock® Patented shaft retention system</p> <p><i>See shaft retention technical bulletin for details.</i></p>		<p><b>W1C</b> - 14.25 Dia. Spindle          12x 3/4-16 UNF - 2B          THRU on 12.750 BC/          SAE 'C' (2 and 4 Bolt)</p> <p><b>W1D</b> - 14.25 Dia. Spindle          12x 3/4-16 UNF - 2B          THRU on 12.750 BC /          SAE 'D' (4 Bolt)</p> <p><b>C1</b> - Custom Spindle</p>		<p><b>18</b> - 17.83:1  <b>27</b> - 27.01:1  <b>35</b> - 35.22:1  <b>46</b> - 45.95:1</p> <p><i>Ratios up to 90,000:1 available</i></p>	
		<p><b>A</b> - Round Flange:          12 X 3/4-16 Studs on          19.75 Dia. B.C.</p> <p><b>F</b> - Flangeless Mounting:          20 X 5/8-11 Holes on          16.25 Dia. B.C.</p> <p><b>C</b> - Custom</p>		<p><b>4</b> - 14T 12/24 DP Spline  <b>9</b> - 13T 8/16 DP Spline</p> <p><i>Verify motor shaft compatibility with factory.</i></p>		<p><b>T</b> - Thru Mount Spindle  <b>F</b> - Flow Thru Cooling  <b>D</b> - Disconnect</p>