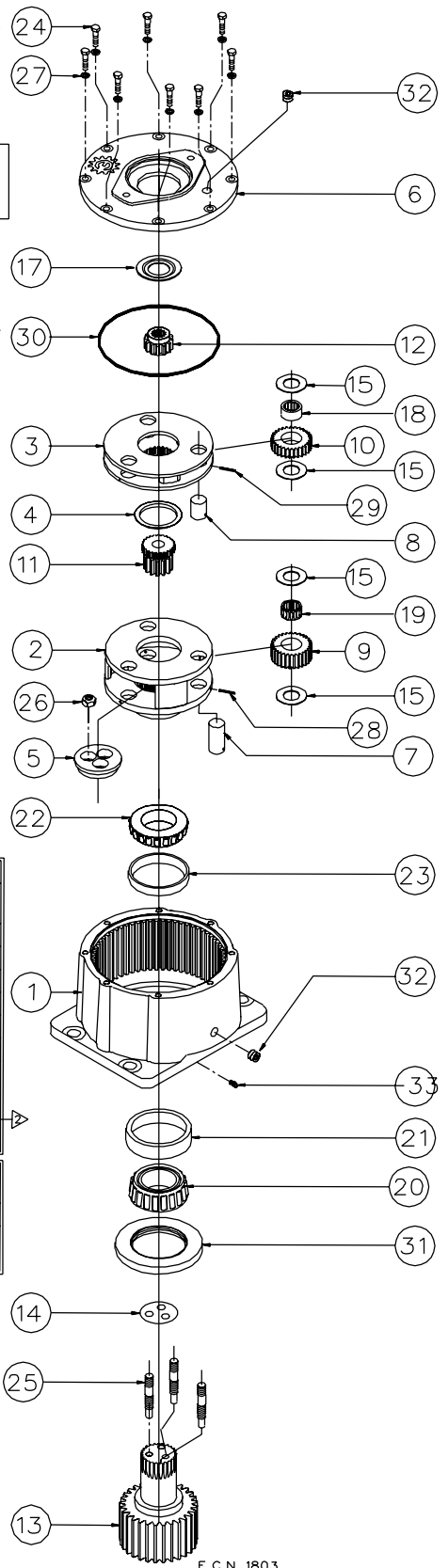




MODEL E60 DOUBLE PLANETARY

EFFECTIVE FOR:
FROM: S/N 17802 02/15/94
TO: CURRENT



ITEM	DESCRIPTION	PART NUMBER	RATIO 19:1 26:1 36:1
1	CASE	83-004-3012	1
2	CARRIER (SEC)	-A-	1
3	CARRIER (PRI)	-B-	1
4	THRUST WASHER- SECONDARY	81-004-2711	1
5	PLATE- BEARING RETAINER	83-004-1062	1
6	COVER	-C-	1
7	PLANET SHAFT (SEC)	83-004-1031	3
8	PLANET SHAFT (PRI)	81-004-0071	3
9	PLANET GEAR (SEC)	-D-	3
10	PLANET GEAR (PRI)	-E-	3
11	SUN GEAR	-F-	1
12	INPUT GEAR	-G-	1
13	OUTPUT SHAFT	-H-	1
14	SHIM	83-004-1101	-J-
15	THRUST WASHER- PLANET	81-004-1561	12
16	-	-	-
17	INPUT THRUST WASHER	81-004-2701	1
18	BEARING	01-105-0410	3
19	BEARING	01-105-0420	3
20	BEARING CONE	01-102-0090	1
21	BEARING CUP	01-103-0080	1
22	BEARING CONE	01-102-0100	1
23	BEARING CUP	01-103-0090	1
24	HEX HD CAPSCREW	01-150-1020	8
25	STUD 7/16-20 X 2-15/16	83-004-1191	3
26	LOCKNUT	01-158-0330	3
27	LOCKWASHER	01-166-0010	8
28	ROLL PIN- SEC. PLANET	01-153-0210	3
29	ROLL PIN- PRI. PLANET	01-153-0180	3
30	O-RING	01-402-0420	1
31	SHAFT SEAL	01-405-0380	1
32	MAGNETIC PIPE PLUG	01-207-0070	2
33	GREASE FITTING (OPTIONAL)	01-215-0070	1

NOTE	CODE	DESCRIPTION	PART NUMBER		
			19.54:1 RATIO	26.52:1 RATIO	36.00:1 RATIO
-A-	-	CARRIER (SEC)	83-004-1213	83-004-1213	83-004-1223
-B-	-	CARRIER (PRI)	81-004-2732	81-004-2742	81-004-2742
-D-	-	PLANET GEAR (SEC)	84-004-1042	84-004-1042	83-004-1042
-E-	-	PLANET GEAR (PRI)	81-004-0642	81-004-0532	81-004-0532
-F-	-	SUN GEAR	63-004-1012	63-004-1012	83-004-1052
-G-	1	INPUT GEAR - 21 T 20/40 DP	81-004-2342	N/A	N/A
	2	INPUT GEAR - 13 T 16/32 DP	81-004-0652	81-004-0482	81-004-0482
	3	INPUT GEAR - SAE 1"-6B	83-004-1112	83-004-1082	83-004-1082
	4	INPUT GEAR - 14 T 12/24 DP	81-004-1342	SPECIAL	81-004-2792
	5	INPUT GEAR - 15 T 16/32 DP	81-004-1892	81-004-2552	81-004-2552

NOTE	CODE	COVER	ALL EXCEPT CODE 4 INPUT	WITH CODE 4 INPUT ONLY	
				ALL EXCEPT 36:1	36:1 ONLY
-C-	A	SAE 'A' 2 AND MOD. 4 BOLT	81-004-2803	81-004-2813	81-004-2923
	B	SAE 'B' 2 BOLT	81-004-2723	81-004-2823	81-004-2913
	C	SAE 'C' 2 BOLT AND 4 BOLT	81-004-2833	81-004-2833	81-004-2893

NOTE	CODE	OUTPUT SHAFT	PART NUMBER
-H-	D1	2" DIA 3/8" KEY	83-004-4023
	D2	2" DIA 23T 12/24 DP SPL	83-004-4043
	D3	2-1/4" DIA 1/2 KEY	84-004-4073
	D4	3" DIA 3/4" KEY	83-004-4233
	D5	2" DIA 1/2" KEY	83-004-4393
C1	CUSTOM		

OPTIONS:
SEAL KIT P/N 83-016-5011
(INCLUDES 1 EACH OF
ITEMS 30 AND 31)

▶ 36:1 UNITS WITH CODE 4 INPUT ONLY:
REPLACE ITEM 17 (81-004-2701)
WITH: 1 EACH OF 01-112-0220
2 EACH OF 01-112-0230
ADD 1 OF ITEM 4 (81-004-2711)

NOTE: -J- BEARING PRELOAD DETERMINES QUANTITY OF SHIMS.