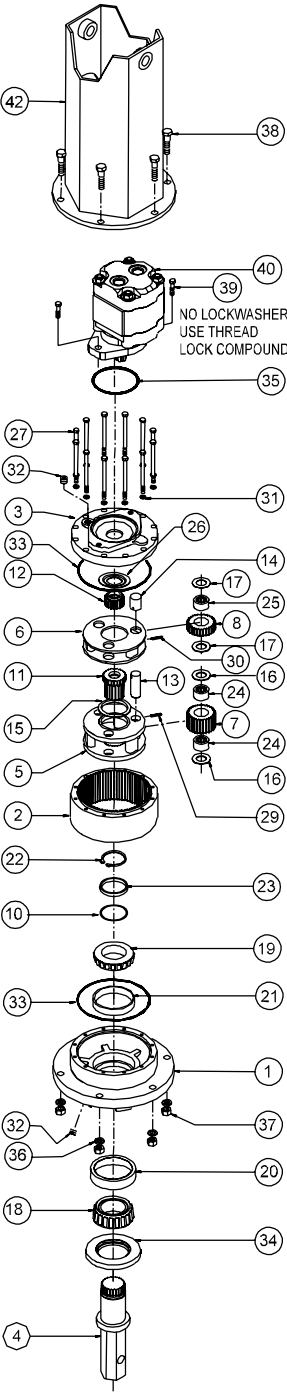




MODEL D50 DIGGER



EFFECTIVE
FROM: S/N 29445 2-28-97
TO: (CURRENT)

DESCRIPTION

BASE
RING GEAR
COVER
OUTPUT SHAFT - HEX 2"
OUTPUT SHAFT - DIA 2"
CARRIER-SECONDARY
CARRIER-PRIMARY
PLANET GEAR-SEC.
PLANET GEAR-PRI.
SHIM(S)
SUN GEAR-SECONDARY
INPUT GEAR (CODE 2 - 13T SPLINE)
PLANET SHAFT-SECONDARY
PLANET SHAFT-PRIMARY
THRUST WASHER-SEC CUP
THRUST WASHER-SEC.PLANET (GEAR)
THRUST WASHER-PRI.PLANET (GEAR)
BEARING CONE (OUTER)
BEARING CONE (INNER)
BEARING CUP (OUTER)
BEARING CUP (INNER)
RETAINING RING
SPACER
BEARING-SEC.PLANET
BEARING-PRI.PLANET
THRUST WASHER-INPUT
HEX CAPSCREW 7/16-20 X 4.5 GR8
ROLLPIN-SECONDARY 3/16 X 7/8
ROLLPIN-PRIMARY 1/8 X 1
LOCKWASHER 7/16 MED
PIPE PLUG-MAGNETIC 3/8 NPT-SOC HD
O-RING 167 MM X 3 MM
SEAL-SHAFT
O-RING #242
-
HEX NUT (STD) 1/2-13 GR 5 ZINC PLATE
HHCS - 1/2-13 X 2-1/4
HHCS 1/2-13 X 1-1/4
HYD. MOTOR M51A-1.7 (5020-21F64)
HYD. MOTOR M51A-2.0 (5025-21F63)
BAIL ASSEMBLY

		5020-21F64	5025-21F64	5025-21F63
RATIO				
ITEM	QTY	PART NUMBER	PART NUMBER	PART NUMBER
1	1	50-004-3172	50-004-3172	50-004-3172
2	1	50-004-1023	50-004-1023	50-004-1023
3	1	50-004-1183	50-004-1183	50-004-1183
4	1	50-004-4082	50-004-4082	50-004-4082
		50-004-4092	50-004-4092	50-004-4092
5	1	50-004-1062	50-004-1052	50-004-1052
6	1	50-004-1072	50-004-1072	50-004-1072
7	3	85-004-1051	85-004-1041	85-004-1041
8	3	85-004-1021	85-004-1021	85-004-1021
10	*	85-004-1221	85-004-1221	85-004-1221
11	1	85-004-1412	85-004-1412	85-004-1412
12	1	85-004-1062	85-004-1062	85-004-1062
13	3	71-004-0121	71-004-0121	71-004-0121
14	3	81-004-0071	81-004-0071	81-004-0071
15	1	50-004-1011	50-004-1011	50-004-1011
16	6	85-004-1181	85-004-1181	85-004-1181
17	6	81-004-1561	81-004-1561	81-004-1561
18	1	01-102-0140	01-102-0140	01-102-0140
19	1	01-102-0150	01-102-0150	01-102-0150
20	1	01-103-0130	01-103-0130	01-103-0130
21	1	01-103-0140	01-103-0140	01-103-0140
22	1	01-160-0430	01-160-0430	01-160-0430
23	1	50-004-1101	50-004-1101	50-004-1101
24	6	01-105-0010	01-105-0010	01-105-0010
25	3	01-105-0410	01-105-0410	01-105-0410
26	1	50-004-1091	50-004-1091	50-004-1091
27	12	01-150-1550	01-150-1550	01-150-1550
29	3	01-153-0210	01-153-0210	01-153-0210
30	3	01-153-0080	01-153-0080	01-153-0080
31	12	01-166-0340	01-166-0340	01-166-0340
32	2	01-207-0070	01-207-0070	01-207-0070
33	2	01-402-0560	01-402-0560	01-402-0560
34	1	01-405-0530	01-405-0530	01-405-0530
35	1	01-402-0220	01-402-0220	01-402-0220
36	-	-	-	-
37	6	01-158-0060	01-158-0060	01-158-0060
38	6	01-150-0920	01-150-0920	01-150-0920
39	2	01-150-0250	01-150-0250	01-150-0250
		01-304-0640	01-304-0640	-
40	1	-	-	01-304-0630
42	1	50-005-2092	50-005-2092	50-005-2092

NOTES: * BEARING PRELOAD DETERMINES QUANTITY OF SHIMS.

SEAL KIT (P/N 85-016-0601) INCLUDES (2 EA.) O-RINGS ITEM 33 AND (1 EA.) SEAL ITEM 34.