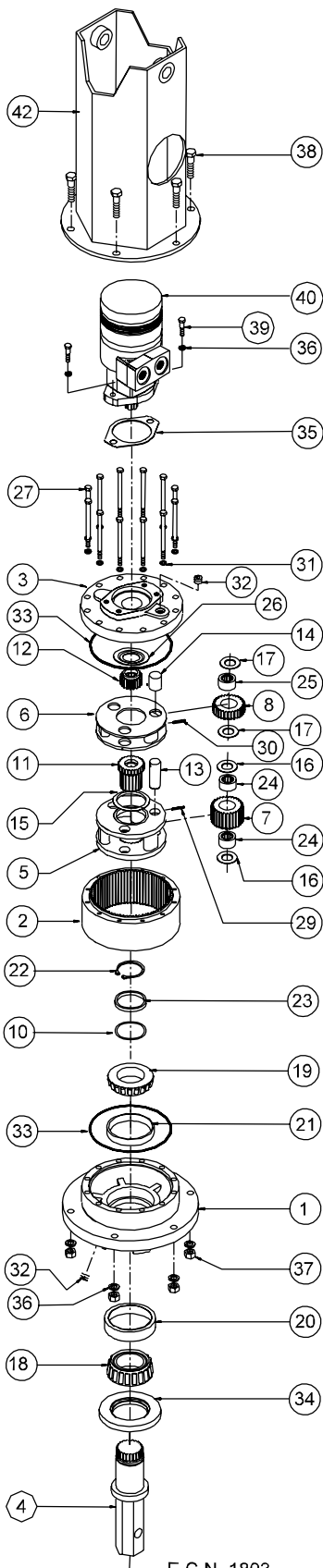




# ESKRIDGE

# MODEL D50



EFFECTIVE  
FROM: S/N 29445 2-28-97  
TO: (CURRENT)

5016-21F54



## DESCRIPTION

ITEM	QTY.	PART NUMBER
BASE	1	50-004-3172
RING GEAR	1	50-004-1023
COVER	1	50-004-1173
OUTPUT SHAFT - HEX 2"		50-004-4082
OUTPUT SHAFT - DIA 2"	1	50-004-4092
CARRIER-SECONDARY	1	50-004-1062
CARRIER-PRIMARY	1	50-004-1082
PLANET GEAR-SEC.	7	85-004-1051
PLANET GEAR-PRI.	3	85-004-1031
SHIM(S)	*	85-004-1221
SUN GEAR-SECONDARY	1	85-004-1412
INPUT GEAR (CODE 3 SAE 1"-6B)	1	85-004-1122
PLANET SHAFT-SECONDARY	13	71-004-0121
PLANET SHAFT-PRIMARY	3	81-004-0071
THRUST WASHER-SEC CUP	15	50-004-1011
THRUST WASHER-SEC.PLANET (GEAR)	16	85-004-1181
THRUST WASHER-PRI.PLANET (GEAR)	17	81-004-1561
BEARING CONE (OUTER)	18	01-102-0140
BEARING CONE (INNER)	19	01-102-0150
BEARING CUP (OUTER)	20	01-103-0130
BEARING CUP (INNER)	21	01-103-0140
RETAINING RING	22	01-160-0430
SPACER	23	50-004-1101
BEARING-SEC.PLANET	24	01-105-0010
BEARING-PRI.PLANET	25	01-105-0410
THRUST WASHER-INPUT	26	50-004-1091
HEX CAPSCREW 7/16-20 X 4.5 GR8	27	01-150-1550
ROLLPIN-SECONDARY 3/16 X 7/8	29	01-153-0210
ROLLPIN-PRIMARY 1/8 X 1	30	01-153-0080
LOCKWASHER 7/16 MED	31	01-166-0340
PIPE PLUG-MAGNETIC 3/8 NPT-SOC HD	32	01-207-0070
O-RING 167 MM X 3 MM	33	01-402-0560
SEAL-SHAFT	34	01-405-0530
GASKET	35	90-004-1081
LOCK WASHER 1/2	36	01-166-0030
HEX NUT (STD) 1/2-13 GR 5 ZINC PLATE	37	01-158-0060
HHCS - 1/2-13 X 2-1/4	38	01-150-0920
HHCS 1/2-13 X 1-1/4	39	01-150-0250
HYD. MOTOR MB18 (5005-21F55)	40	-
HYD. MOTOR MB10 (5005-21F54) & (5016-21F54)	1	01-304-0540
BAIL ASSEMBLY	42	50-005-2092

NOTES: \* BEARING PRELOAD DETERMINES QUANTITY OF SHIMS.

SEAL KIT (P/N 85-016-0601) INCLUDES (2 EA.) O-RINGS AND (1 EA.) SEAL.