

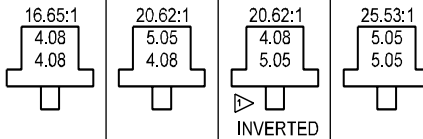
# MODEL P20

DOUBLE PLANETARY

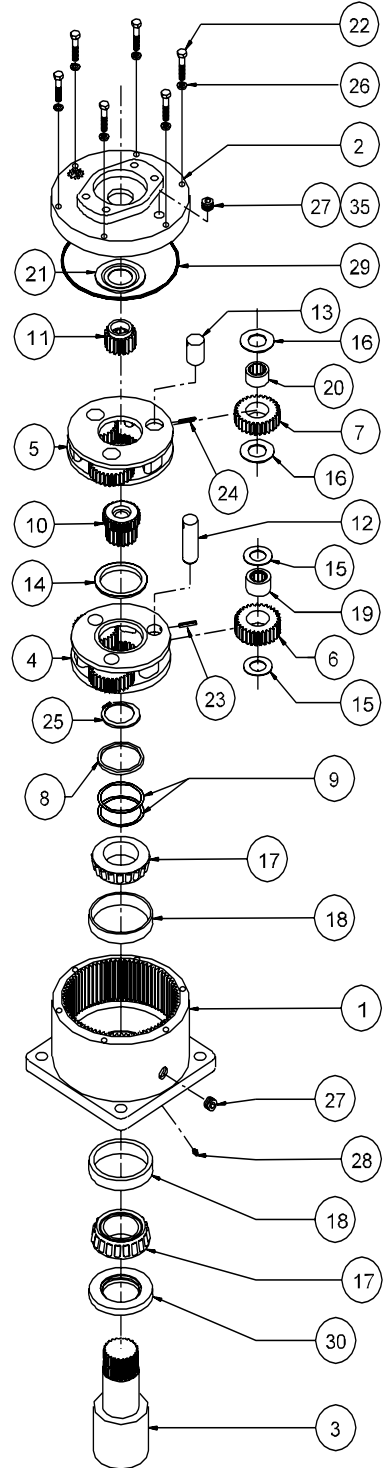


EFFECTIVE  
FROM: S/N 16401 07-01-93  
TO: (CURRENT)

## RATIO'S



CODE	DESCRIPTION	ITEM	QTY.	PART NUMBER	PART NUMBER	PART NUMBER	PART NUMBER
	P20 CASE-SQUARE-DOUBLE PLT.(NO ZERK)	1	1	20-004-3064			
	P20 CASE-SQUARE-DOUBLE PLT. W/ZERK			20-004-3064Z			
	CP20 CASE-CUST.MTG PER CUSTOMER SPECS.			-	-	-	-
A	COVER-SAE 'A'			85-004-1513			
B	COVER-SAE 'B' 2-BOLT	2	1	85-004-1503			
C	COVER-SAE 'C' 4-BOLT			28-004-1013			
F1	SHAFT-1.5" KEYED			20-004-1122			
F2	SHAFT-2" KEYED	3	1	20-004-4112			
C1	SHAFT-CUSTOM PER CUSTOMER SPECS.			-	-	-	-
	CARRIER-SECONDARY	4	1	20-004-1282	20-004-1282	20-004-1292	20-004-1292
	CARRIER-PRIMARY	5	1	50-004-1082	50-004-1072	50-004-1082	50-004-1072
	PLANET GEAR-SEC.	6	3	20-004-1041	20-004-1041	20-004-1051	20-004-1051
	PLANET GEAR-PRI.	7	3	85-004-1031	85-004-1021	85-004-1031	85-004-1021
	SUPPORT WASHER	8	1	20-004-1031			
	SHIM	9	*	20-004-1091			
	SUN GEAR-SECONDARY	10	1	20-004-1332	20-004-1062	20-004-1072	20-004-1072
1	INPUT GEAR 21T,20/40 D.P.SPLINE			85-004-1402		85-004-1402	N/A
2	INPUT GEAR 13T,16/32 D.P.SPLINE			85-004-1102	85-004-1062		85-004-1062
3	INPUT GEAR SAE 1"-6B SPLINE			85-004-1122	85-004-1112		85-004-1112
4	INPUT GEAR 14T,12/24 D.P.SPLINE			85-004-1533		85-004-1533	N/A
5	INPUT GEAR 15T,16/32 D.P.SPLINE			85-004-1542	85-004-1422		85-004-1422
6	INPUT GEAR 1"DIA X .25" KEY			85-004-1582		85-004-1582	N/A
	PLANET SHAFT-SECONDARY	12	3	20-004-1081			
	PLANET SHAFT-PRIMARY	13	3	81-004-0071			
	THRUST WASHER-SEC.CUP	14	1	50-004-1011			
	THRUST WASHER-(SEC. PLANET GEAR)	15	6	85-004-1181			
	THRUST WASHER-(PRI. PLANET GEAR)	16	6	81-004-1561			
	BEARING CONE	17	2	01-102-0160			
	BEARING CUP	18	2	01-103-0160			
	BEARING-SEC.PLANET	19	3	01-105-0010			
	BEARING-PRI.PLANET	20	3	01-105-0410			
	THRUST WASHER-INPUT	21	1	50-004-1091			
	HEX CAPSCREW 5/16-18 X 1.5, GR8	22	6	01-150-1400			
	ROLLPIN-SECONDARY 3/16 X 7/8	23	3	01-153-0210			
	ROLLPIN-PRIMARY 1/8 X 1	24	3	01-153-0080			
	RETAINING RING	25	1	01-160-0250			
	LOCKWASHER 5/16 MED	26	6	01-166-0110			
	PIPE PLUG-MAG. 3/8 NPT-SOC HD	27	2	01-207-0070			
	GREASE FITTING (OPTIONAL)	28	(1)	01-215-0050			
	O-RING 167 MM X 3 MM	29	1	01-402-0560			
	SEAL-SHAFT	30	1	01-405-0610			
	AIR VENT 3/8 NPT (OPTIONAL)	35	(1)	01-216-0070			
		-	-	-	-	-	-



NOTE \* BEARING PRELOAD DETERMINES QUANTITY OF SHIMS.  
SEAL KIT; P/N 20-016-0511; INCLUDES ITEMS 29 AND 30.

▷ FOR 20:1 RATIO, INPUT CODES 1, 4 AND 6 REQUIRE "INVERTED" RATIO CARRIER ASSEMBLIES.