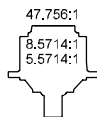
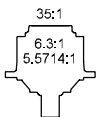




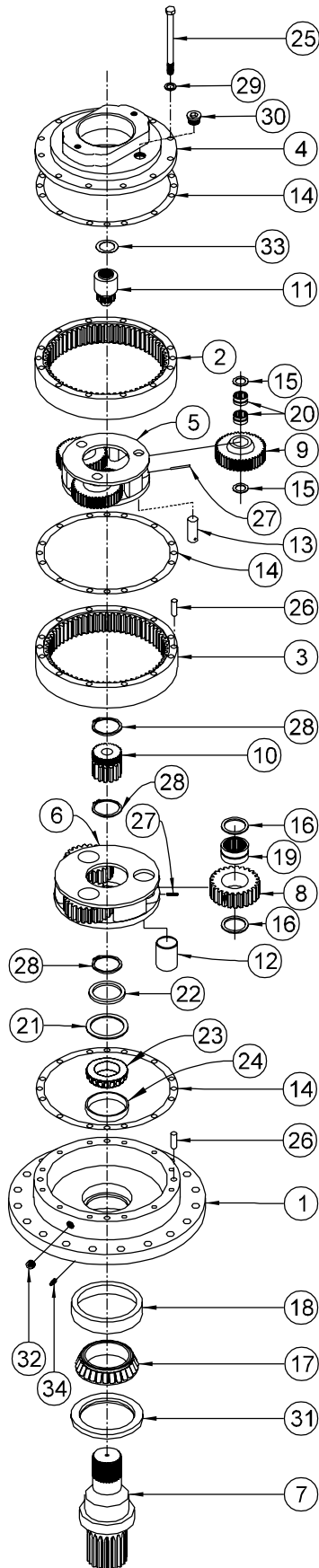
# ESKRIDGE

# MODEL 150

RATIO →



ITEM	QTY	DESCRIPTION	RATIO →	
			35:1	47.756:1
		EFFECTIVE: FROM: S/N 12747 3-18-91 TO: CURRENT		
		DESCRIPTION	PART NO.	PART NO.
1	1	BASE - (A150)	80-004-3023	80-004-3023
2	1	RING GEAR - PRIMARY	80-004-0832	80-004-0832
3	1	RING GEAR - SECONDARY	80-004-0842	80-004-0842
4	1	COVER- SAE 'A' 2 AND 4 BOLT @ 45° ('A' OPTION)	80-005-1254	80-005-1254
		COVER- SAE 'A' 4 BOLT @ 90° ('F' OPTION)	80-005-1264	80-005-1264
		COVER- SAE 'B' 2 AND 4 BOLT ('B' OPTION)	80-005-1274	80-005-1274
		COVER- SAE 'C' 2 AND 4 BOLT ('C' OPTION) ***	80-004-1174	80-004-1174
5	1	CARRIER-PRI.	73-004-1043	73-004-1053
6	1	CARRIER-SEC.	80-005-1303	80-005-1303
7	1	D1-3.5 DIA X 20T 6/12 DP SPLINE	80-004-4052	80-004-4052
		D2-3.75" DIA X 1" KEY	80-004-4082	80-004-4082
		C1 SHAFT-CUSTOM (PER CUSTOMER SPECS.)		
8	3	PLANET GEAR-SEC.	71-004-0092	71-004-0092
9	3	PLANET GEAR-PRI.	73-004-1032	73-004-1022
10	1	SUN GEAR	71-004-0102	71-004-0102
11	1	INPUT GEAR-13T,16/32 DP SPLINE	80-004-1312	80-004-1292
		INPUT GEAR-SAE 1"-6B SPLINE	80-004-1322	80-004-1282
		INPUT GEAR-14T,12/24 DP SPLINE	73-004-1012	73-004-1002
12	3	PLANET SHAFT-SEC.	71-004-0081	71-004-0081
13	3	PLANET SHAFT-PRI.	71-004-0121	71-004-0121
14	3	GASKET - RING GEAR	80-004-1041	80-004-1041
15	6	WASHER-PRI.	71-004-0861	71-004-0861
16	6	WASHER-SEC.	71-004-0871	71-004-0871
17	1	BEARING CONE - LOWER SHAFT	01-102-0120	01-102-0120
18	1	BEARING CUP - LOWER SHAFT	01-103-0110	01-103-0110
19	3	BEARING - PLANET SEC.	01-105-0020	01-105-0020
20	6	BEARING - PLANET PRI.	01-105-0010	01-105-0010
21	*	SHIM	81-004-2061	81-004-2061
22	1	SPACER	80-004-1111	80-004-1111
23	1	BEARING CONE - UPPER SHAFT	01-102-0030	01-102-0030
24	1	BEARING CUP - UPPER SHAFT	01-103-0030	01-103-0030
25	12	H.H.C.S. (1/2-13 X 6)	01-150-1190	01-150-1190
26	6	DOWEL (1/2 X 1-1/2)	01-152-0040	01-152-0040
27	6	ROLL PIN (3/16 X 1)	01-153-0020	01-153-0020
28	3	RETAINING RING	01-160-0030	01-160-0030
29	12	LOCKWASHER - MED (1/2)	01-166-0030	01-166-0030
30	1	HOLLOW HEX PLUG * O-RING	01-208-0030	01-208-0030
31	1	SEAL	01-405-0500	01-405-0500
32	1	PLUG (1/2 NPT MAGNETIC)	01-207-0041	01-207-0041
33	1	THRUST WASHER **	01-112-0230	01-112-0230
34	1	PIPE PLUG 1/4 NPT - HOLLOW HEX	01-207-0020	01-207-0020
		ZERK (1/4 NPT) (OPTIONAL)	01-215-0040	01-215-0040



\* QUANTITY OF SHIMS DETERMINED BY BEARING PRELOAD.

\*\* NOT USED WITH 80-004-1174 COVER.

\*\*\* HYDRAULIC MOTORS USED WITH THIS COVER MUST HAVE A 2.19 DISTANCE FROM MOUNTING FACE TO END OF SHAFT. CONTACT ESKRIDGE FOR INPUT GEARS TO BE USED WITH OTHER MOTORS.

## OPTIONS

SEAL KIT P/N 80-016-2011  
INCLUDES 1 EA. OF ITEM 31 AND  
A QTY 3 OF ITEM 14E.C.N. 1803  
X150D2-AC DATE: 04-28-00