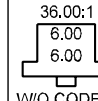
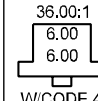
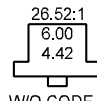
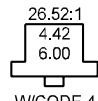
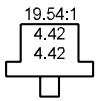


100E Exploded View Drawing

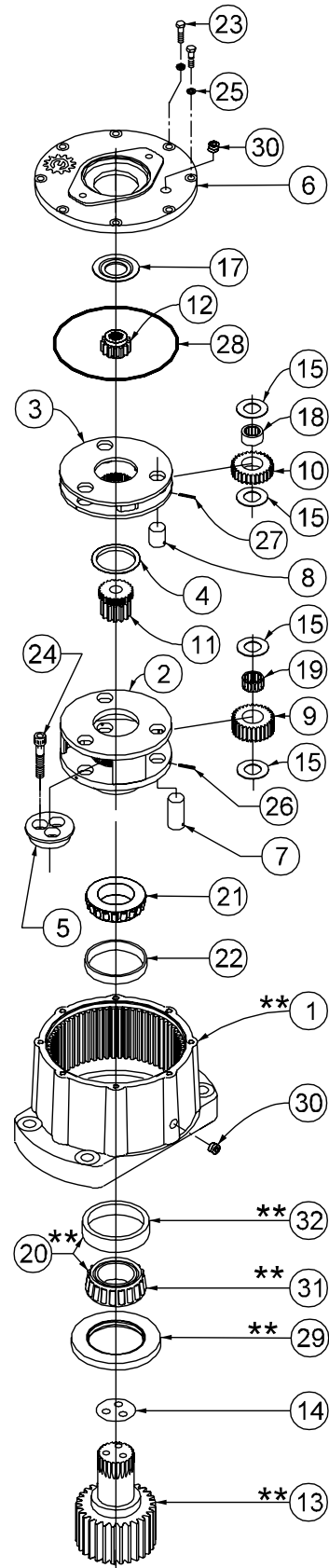


MODEL E100

RATIO →
EFFECTIVE:
FROM: S/N 17802 02-15-94
TO: CURRENT



| ITEM | QTY | DESCRIPTION | PART NO. | PART NO. | PART NO. | PART NO. | PART NO. |
|--------------|-----|------------------------------------|--------------------|-------------|-------------|-------------|-------------|
| 1 | 1 | CASE-E100 (STD) | 86-004-3502 | | | | |
| | | CASE-E100 (CUSTOM) | - | | | | |
| 2 | 1 | CARRIER (SEC) | 83-004-1213 | 83-004-1223 | 83-004-1213 | 83-004-1223 | 83-004-1223 |
| 3 | 1 | CARRIER (PRI) | 81-004-2732 | 81-004-2732 | 81-004-2742 | 81-004-2742 | 81-004-2742 |
| 4 | 1 | THRUST WASHER- SECONDARY | 81-004-2711 | 81-004-2711 | 81-004-2711 | N/A | 81-004-2711 |
| | | THRUST WASHER- SECONDARY | N/A | N/A | N/A | 81-004-2711 | N/A |
| 5 | 1 | PLATE- BEARING RETAINER | 86-004-1002 | | | | |
| COVER | 1 | SAE 'A' 2 AND MOD 4 BOLT | 81-004-2803 | N/A | 81-004-2803 | N/A | 81-004-2803 |
| | | SAE 'A' 2 AND MOD 4 BOLT W/ CODE 4 | 81-004-2813 | 81-004-2813 | N/A | 81-004-2923 | N/A |
| | | SAE 'B' 2 BOLT | 81-004-2723 | N/A | 81-004-2723 | N/A | 81-004-2723 |
| | | SAE 'B' 2 BOLT W/ CODE 4 | 81-004-2823 | 81-004-2823 | N/A | 81-004-2913 | N/A |
| | | SAE 'C' 2 AND 4 BOLT | 81-004-2833 | N/A | 81-004-2833 | N/A | 81-004-2833 |
| | | SAE 'C' 2 AND 4 BOLT W/ CODE 4 | 81-004-2833 | 81-004-2833 | N/A | 81-004-2893 | N/A |
| 7 | 3 | PLANET SHAFT (SEC) | 83-004-1031 | | | | |
| 8 | 3 | PLANET SHAFT (PRI) | 81-004-0071 | | | | |
| 9 | 3 | PLANET GEAR (SEC- UNIT CAGE BRG) | 86-004-1012 | 86-004-1022 | 86-004-1012 | 86-004-1022 | 86-004-1022 |
| 10 | 3 | PLANET GEAR (PRI) | 81-004-0642 | 81-004-0642 | 81-004-0532 | 81-004-0532 | 81-004-0532 |
| 11 | 1 | SUN GEAR | 63-004-1012 | 83-004-1052 | 63-004-1012 | 83-004-1052 | 83-004-1052 |
| INPUT GEAR | 1 | CODE 1 21 T 20/40 DP | 81-004-2342 | N/A | N/A | N/A | N/A |
| | | CODE 2 13 T 16/32 DP | 81-004-0652 | N/A | 81-004-0482 | N/A | 81-004-0482 |
| | | CODE 3 SAE 1"-6B | 83-004-1112 | N/A | 83-004-1082 | N/A | 83-004-1082 |
| | | CODE 4 14 T 12/24 DP | 81-004-1342 | 81-004-1342 | N/A | 81-004-2792 | N/A |
| | | CODE 5 15 T 16/32 DP | 81-004-1892 | N/A | 81-004-2552 | N/A | 81-004-2552 |
| OUTPUT SHAFT | 1 | D1 23T 8/16 SPL | S/N: 17802 - 22857 | 86-004-4523 | | | |
| | | | S/N: 22858 & AFTER | 86-004-4633 | | | |
| | | D2 3" DIA 5/8" KEY | S/N: 17802 - 22857 | 86-004-4533 | | | |
| | | | S/N: 22858 & AFTER | 86-004-4643 | | | |
| 14 | * | SHIM | 83-004-1101 | | | | |
| 15 | 12 | THRUST WASHER- PLANET | 81-004-1561 | | | | |
| 17 | 1 | THRUST WASHER-INPUT | 81-004-2701 | 81-004-2701 | 81-004-2701 | N/A | 81-004-2701 |
| 18 | 3 | BEARING | 01-105-0410 | | | | |
| 19 | 3 | BEARING | 01-105-0500 | | | | |
| 20 | 1 | BEARING CONE& CUP | S/N: 17802 - 22857 | 01-102-0180 | | | |
| 21 | 1 | BEARING CONE-INNER | | 01-102-0100 | | | |
| 22 | 1 | BEARING CUP-INNER | | 01-103-0090 | | | |
| 23 | 8 | HEX HD CAPSCREW (3/8-16X1-1/4 GR8) | | 01-150-1020 | | | |
| 24 | 3 | SOC HD CAPSCREW (1/2-20X2-1/2 GR8) | | 01-150-1480 | | | |
| 25 | 8 | LOCKWASHER (3/8) | | 01-166-0010 | | | |
| 26 | 3 | ROLL PIN (3/16 X 7/8) | | 01-153-0210 | | | |
| 27 | 3 | ROLL PIN (1/8 X 7/8) | | 01-153-0180 | | | |
| 28 | 1 | O-RING | | 01-402-0420 | | | |
| 29 | 1 | SHAFT SEAL | S/N: 17802 - 22857 | 01-405-0600 | | | |
| | | | S/N: 22858 & AFTER | 01-405-0660 | | | |
| 30 | 2 | MAGNETIC PIPE PLUG (3/8 NPT) | | 01-207-0070 | | | |
| 31 | 1 | BEARING CONE-OUTER | S/N: 22858 & AFTER | 01-102-0200 | | | |
| 32 | 1 | BEARING CUP-OUTER | S/N: 22858 & AFTER | 01-103-0200 | | | |
| 33 | 1 | BEARING | N/A | N/A | N/A | 01-112-0220 | N/A |
| 34 | 2 | THRUST RACE | N/A | N/A | N/A | 01-112-0230 | N/A |



NOTE: * BEARING PRELOAD DETERMINES QUANTITY OF SHIMS.

** IDENTIFICATION OF THESE ITEMS DEPENDS ON UNIT SERIAL NUMBER.

▷ FOR GREASE ZERK OPTION, ADD 'Z' SUFFIX TO P/N

OPTIONS: SEAL KIT S/N: 17802 - 22857 USE P/N 86-016-0600 (INCLUDES 1 EACH OF ITEMS 28 AND 29).

S/N: 22858 & AFTER USE P/N 86-016-0621 (INCLUDES 1 EACH OF ITEMS 28 AND 29).